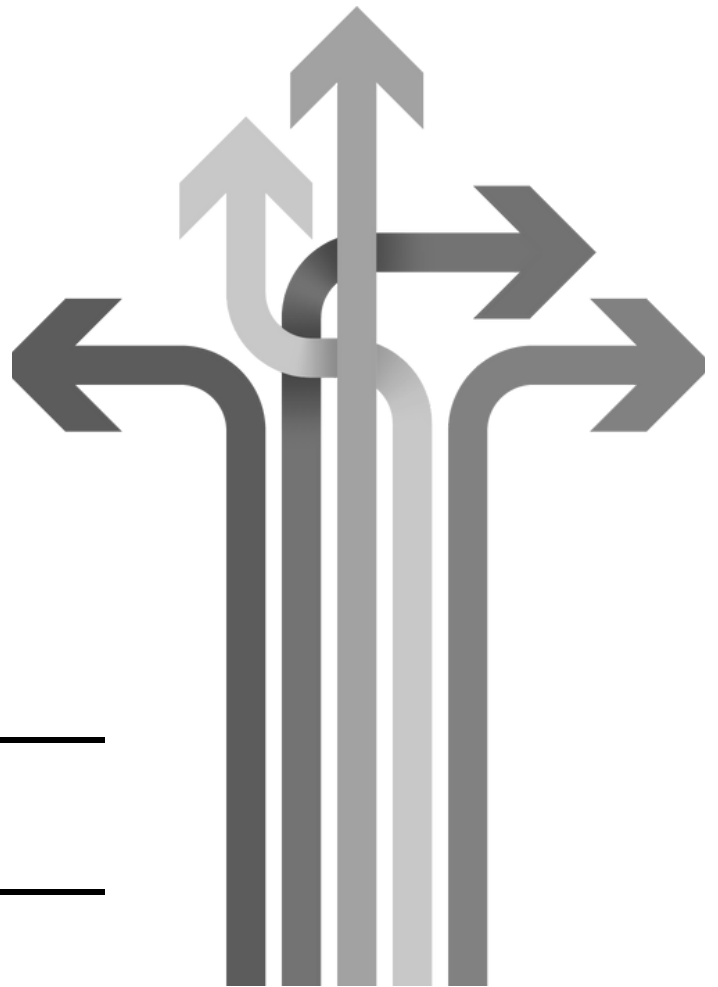


SPPPIE

Student Program Planning Interactive Exhibition

STUDENT WORKBOOK

**SUPPORTING PROGRAM EXPLORATION,
SELECTION & ENROLLMENT**



NAME: _____

DATE: _____

SPPIE | Student Program Planning Interactive Exhibition

STATIONS

Not sure where to start? Here is a review of each station before you get begin.



PERSONAL DISCOVERY

Identify personal and academic abilities, interests, goals, and values through discussions with campus partners, quizzes, worksheets, reflection activities, and online resources.



PROGRAM EXPLORATION

Meet with department representatives to learn about the specific programs that are best aligned with your abilities, interests, goals, and values.



ENROLLMENT FUNDAMEENTALS

Become familiar with program and degree policies and requirements, course enrollment, and adjustment.



PAST PERSPECTIVES

Connect with former UTM students in the Alumni Café and learn from their experiences in specific programs, related careers, and life after graduation.



ADVISING & APPLYING

Attend a group advising and FAQ station to learn about program selection, deferrals, advancement, financial aid and more.

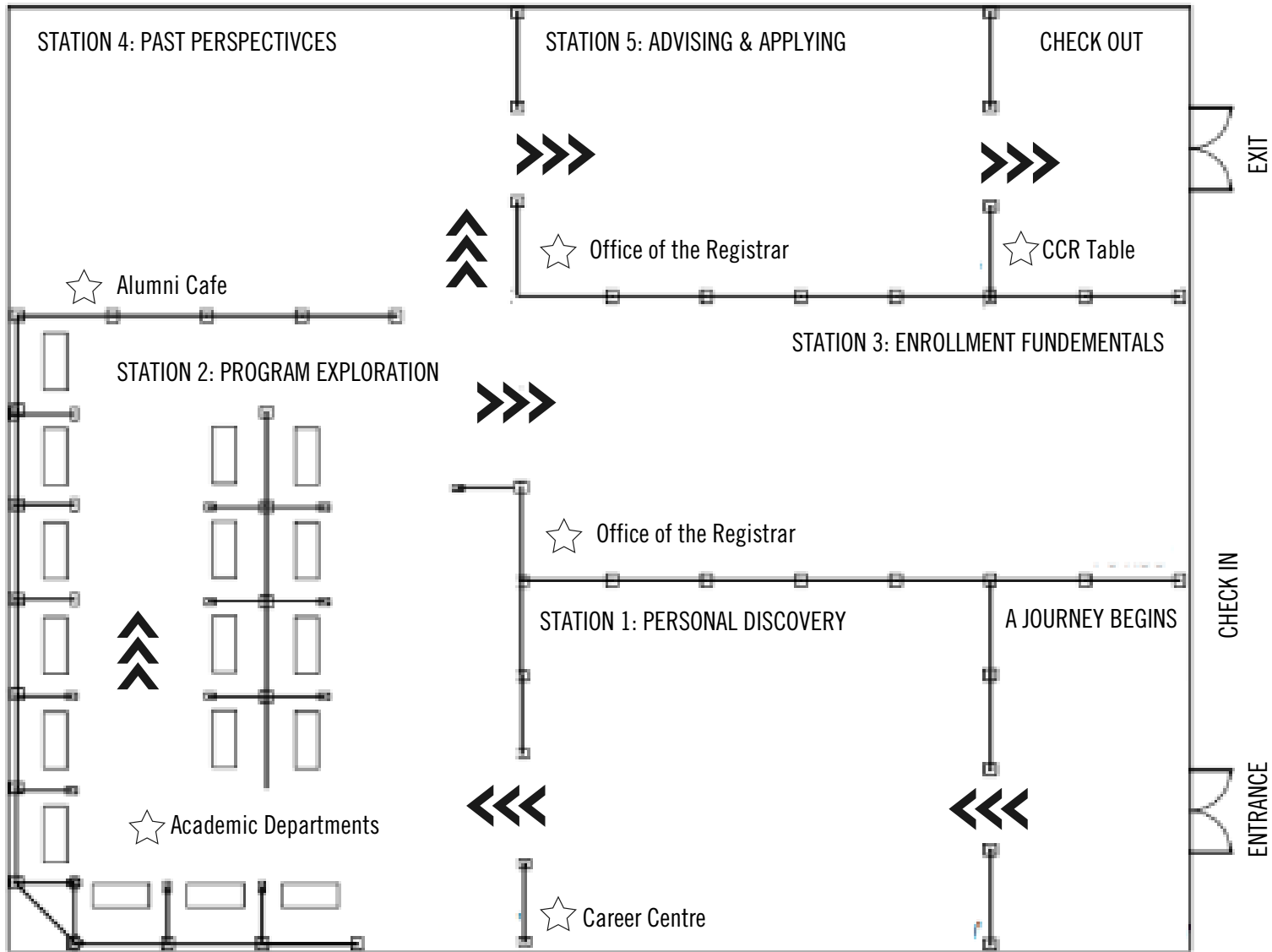
OBJECTIVES

Objectives are helpful to guide your learning and ensure you achieve the goals related to this event. Check back to see if you are able to complete the following by the end of today.

- I can communicate some of my values, interests, skills, and goals related to a potential academic program and/or a future career.
- I am aware of at least one department and program I can apply to at the end of the semester which aligns with my values, interests, skills and academic and career goals.
- I have learned about at least one alternative program that I can apply to that aligns with my values, interests, skills and academic career goals.
- I have clarity on my next steps in choosing a Program of Study.
- I can identify who to reach out to should I have questions about choosing a Program of Study.

SPPIE | Student Program Planning Interactive Exhibition

EVENT MAP



●● NOTES ✕

TOP TIP

MOST STUDENTS FIND IT HELPFUL TO MOVE FROM EACH STATION IN AN ORDERLY FASHION, AND SOME CHOOSE WHICH STATIONS TO PARTICIPATE IN BASED ON A SPECIFIC PROGRAM PLANNING NEED. DO WHAT IS RIGHT FOR YOU!



TOP TIP

LOOK FOR THE CSE STUDENT STAFF IN YELLOW IF YOU NEED ANY HELP NAVIGATING THE STATIONS OR COMPLETING CERTAIN ACTIVITIES.



SPPIE | Student Program Planning Interactive Exhibition

IMPORTANT RESOURCES

ACADEMIC CALENDAR

utm.calendar.utoronto.ca

The Academic Calendar outlines the rules, regulations, and academic curriculum. On this website, you can find detailed descriptions for courses, programs, policies, and more. You will rely on the Calendar throughout your degree as you pursue your goals.

TIMETABLE BUILDER

ttb.utoronto.ca

The Timetable Builder lists the courses offered for the upcoming year, when and where they take place and important enrolment information.

ACORN

acorn.utoronto.ca

You are required to enroll in courses using ACORN. It is also used to view grades and tuition fees, and much more. On this website, you'll also find a link to the ACORN how-to guide for step-by-step tutorials on how to use it!

COURSE ENROLMENT WORKBOOK (PDF)

uoft.me/utm-workbook

The course enrolment workbook is an interactive guide for you that includes links to important websites, self-guided resources, information on how to plan for degree and program requirements and much more.

ACADEMIC AND FINANCIAL DATES & DEADLINES

uoft.me/UTMdates

This website lists all academic and financial important dates and deadlines for you.

NOTES

SPPIE | Student Program Planning Interactive Exhibition

PERSONAL DISCOVERY

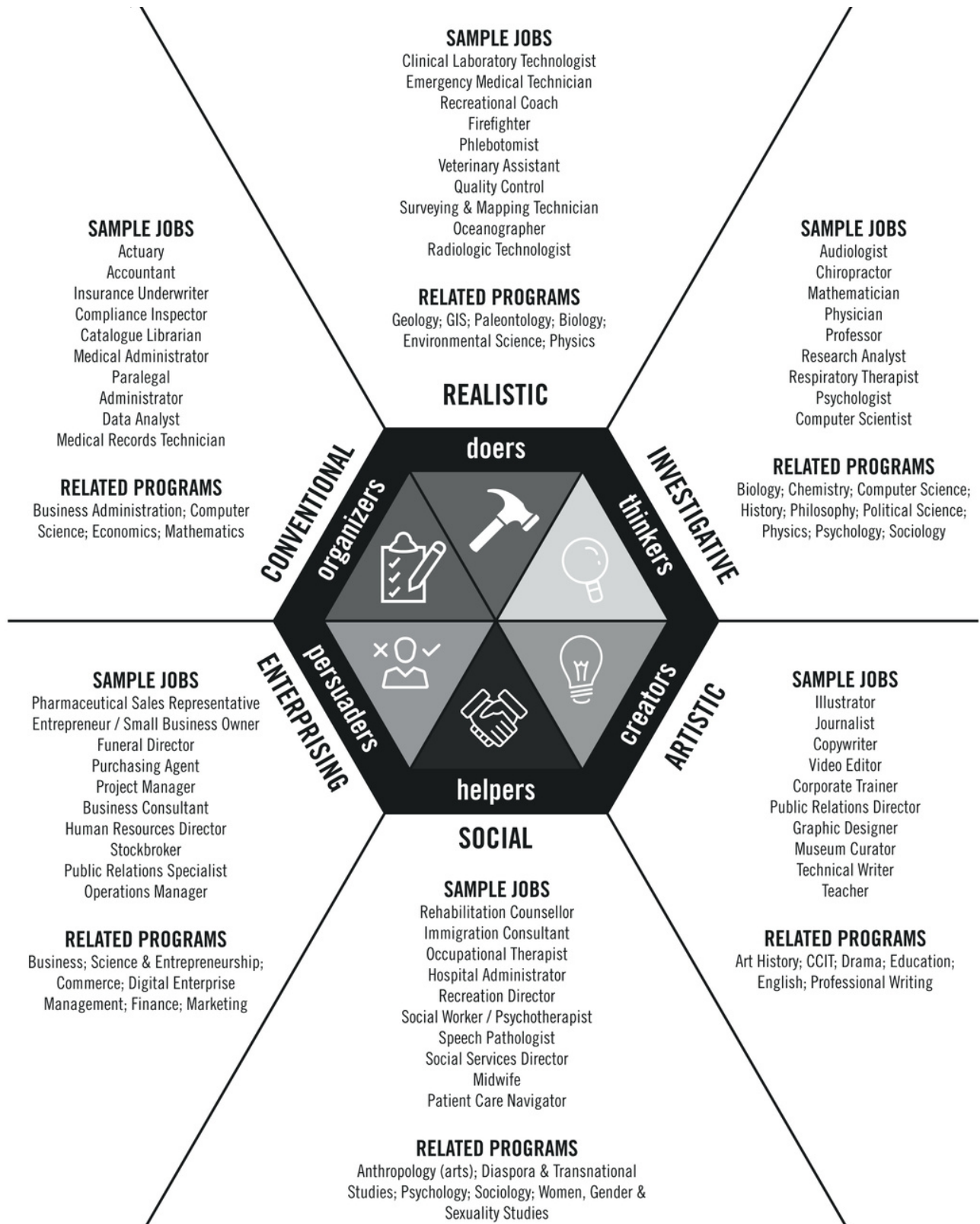
WHAT IS IMPORTANT TO YOU?

Career Value Survey	Very Important	Somewhat Important	Not Important
Independence - Be able to determine the nature of work without significant direction from others; not have to follow instructions or conform to regulations.			
Job Tranquility - Avoid pressure and "the rat race" in the job role and work setting.			
Change and Variety - Have work responsibilities frequently changed in content and setting.			
Aesthetics - Be involved in studying or appreciating the beauty of things, ideas, etc.			
Affiliation - Develop close personal relationships with people as a result of work activity.			
Help Others/society - Be involved in helping people directly, or advancing a positive social agenda.			
Power and Authority - Manage the work activities of others and guide their direction.			
Competition - Engage in activities which pit my abilities against others.			
Stability - Have a work routine and job duties that are largely predictable and not likely to change over a long period of time.			
Creativity (general) - Create new ideas, programs, organized structures or anything else not following a format developed by others.			
Excitement - Experience a high (or frequent) degree of stimulation in the course of my work.			
Work/Life Balance - Have a balance between work and personal life commitments.			
Diversity - Work in an environment that embraces diversity of its employees.			
Integrity - To work in an environment that meets your personal morals and ethics.			
Time Freedom - Have responsibilities I can work at according to my schedule; no specific working hours required.			
Knowledge - Consider the pursuit of knowledge, truth, and understanding of greater importance than monetary gain.			

SPPIE | Student Program Planning Interactive Exhibition

PERSONAL DISCOVERY

FINDING YOUR FOCUS STARTS WITH YOU



SPPIE | Student Program Planning Interactive Exhibition

This exercise will help you begin to discover career and academic areas that suit your interests and personality.

WHAT IS YOUR HOLLAND CODE?



SCAN THE QR CODE TO ACCESS THE HOLLAND CODES EXERCISE.

YOU HAVE SOMETHING TO OFFER



SCAN THE QR CODE TO ACCESS THE SKILLS ARTICULATION MODELS

To access the Skills Articulation Models:

- Scan the QR code and enroll in the Know Yourself course on Quercus.
- Once in the course, click on the Modules tabs in the top right menu.
- Scroll down and click on the Skills Articulation Models

HOW DECIDED ARE YOU ABOUT CAREERS?

The Career Decision Profile helps you:

- Access what career decisions you have already made.
- Identify what you would like to work on more.
- Identify any challenges or barriers you may be experiences.



SCAN THE QR CODE TO ACCESS THE CAREER DECISION PROFILE

There are many more resources and assessment tools available on CLNx. Scan the QR code to learn more!



PERSONAL DISCOVERY

SPPIE | Student Program Planning Interactive Exhibition

WHAT'S NEXT?

Program Selection and Career Options Workshop



Commerce & Management
March 14th 2023 | 1:00 PM – 2:30 PM
March 22nd 2023 | 4:00 PM – 5:30 PM

Arts & Science
March 15th 2023 | 9:00 AM – 10:30 AM
March 23rd 2023 | 12:00 PM – 1:30 PM



◀◀ **SCAN THE QR CODE TO REGISTER FOR THE WORKSHOPS**

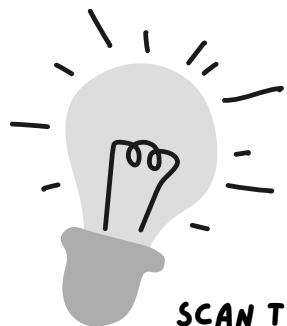
PLAN YOUR UNIVERSITY EXPERIENCE WITH PROGRAM PLANS

Program Plans are a quick and accessible overview of the many academic and co-curricular opportunities available to help you get the most out of your UTM experience.

PROGRAM PLANS



uoft.me/programplans



◀ **SCAN THE QR CODE TO LEARN MORE ABOUT PROGRAM PLANS**

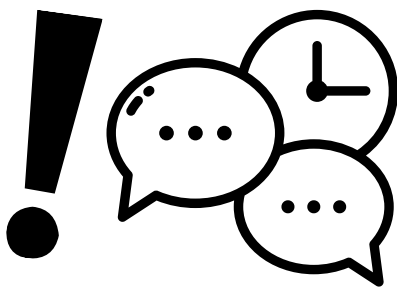
YOUR PROGRAM OF STUDY DOESN'T DETERMINE YOUR CAREER.

Our Careers by Major database identifies potential career fields related to your academic program of choice. Each page provides ideas on how to gain related skills and experience. Useful resources and job samples are also provided.

CAREERS BY MAJOR



◀◀ **SCAN THE QR CODE TO LEARN MORE ABOUT CAREERS BY MAJOR**



BOOK AN APPOINTMENT TO GET STARTED

uoft.me/cbm

PERSONAL DISCOVERY

SPPIE | Student Program Planning Interactive Exhibition

INTERESTED DEPARTMENTS

••x

INTERESTED PROGRAMS

••x

PROGRAM TYPES
MAJOR
MINOR
SPECIALIST

••x

ENTRY REQUIREMENTS

••x

DEGREE REQUIREMENTS

••x

IMPORTANT DATES/CONTACTS

••x

NOTES

PROGRAM EXPLORATION

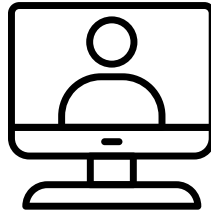
SPPIE | Student Program Planning Interactive Exhibition

Weekly Advising Events

Drop-in sessions are a great way to get quick answers to your questions in-person or online.

FAQ FRIDAYS

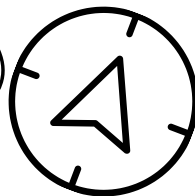
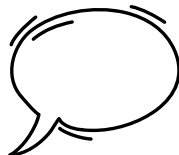
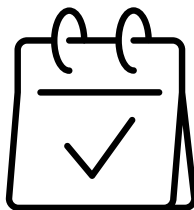
Virtual drop-in office hours with Academic Advisors.
This is a perfect way to connect no matter where you are.
Drop in for 5 minutes, or stay for the full 1.5 hours.



Upcoming FAQ:
Friday, March 17th |
12:30 PM - 2:00 PM

ASK A STUDENT

Learn how to use essential resources to help you plan your degree (i.e., Degree Explorer, Academic Calendar, Timetable builder, CGPA calculator) and be successful in your studies with an upper-year student.



Upcoming Session:
Thursday, March 16
3 pm - 4 pm
(Room KN111 and on Zoom)
In person | Mon, Tues, Wed

ENROLLMENT FUNDAMENTALS

SPPIE | Student Program Planning Interactive Exhibition

The Co-Curricular Record (CCR) is an official U of T document that recognizes your co-curricular involvement as an important part of your university experience! Interested in receiving CCR for attending SPPIE? Complete the following:



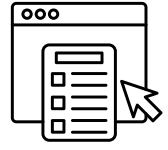
CANSWER THE QUESTIONS



SHOW THE CCR REPRESENTATIVES



SCAN THE QR CODE



SUBMIT THE ONLINE SURVEY

1. Reflect on the stations you have visited so far. What are 3 things you have learned (about yourself, about a program, about the selection process)?

2. Reflect on the stations you have visited so far. What are 2 skills you have gained (refer to the list below if you need some help) and briefly describe how the stations helped you develop these skills?

- Goal setting and prioritization
- Decision-making and action
- Self-advocacy
- Communication
- Taking Initiative
- Career planning
- Critical Thinking
- Reflective Thinking
- Strategic thinking
- Help-Seeking Behaviour
- Inquiry (asking good questions)
- Organization
- Problem-Solving
- Teamwork
- Leadership

3. Reflect on the things you have learned so far. What is 1 question you still have about the program planning process?

CO-CURRICULAR RECORD

SPPIE | Student Program Planning Interactive Exhibition

THANK YOU!

You got this!

THANKS FOR COMING

We are thrilled to have you join us and we hope that you found SPPIE valuable and informative. We're confident you are better prepared to tackle selecting your Program of Study and wish you the very best as you move forward with your decision!

TELL US HOW WE DID

YOUR FEEDBACK IS REALLY IMPORTANT TO US BECAUSE IT MAKES US BETTER FOR NEXT TIME!



Scan the QR code for the SPPIE Feedback Survey.

Complete the survey and enter to win a \$50.00 UTM Bookstore gift card! Prize winners will be contacted via email.

KEEP IN TOUCH

Centre for Student Engagement
<https://www.utm.utoronto.ca/utm-engage/>
Career Centre
<https://www.utm.utoronto.ca/careers/>
Office of the Registrar
<https://www.utm.utoronto.ca/registrar/>
Office of Advancement
<https://www.utm.utoronto.ca/support-utm/office-advancement>

Be sure to keep in touch with the campus partners you connected with today!

CLOSING REMARKS