



UNIVERSITY OF
TORONTO
MISSISSAUGA

Making the Grade

Presented by
the Academic Advising Team
Office of the Registrar



- Everyone wants to be successful
- The best time to start is NOW
- Prepare in advance so there are no regrets or disappointments later

Why is making the grade important?

- To be in good standing and avoid probation/suspension
- To meet program entry requirements
- To meet the minimum CGPA required to graduate with an honours degree
- To meet professional/grad school entry requirements (long-term goals)




Academic Status

- Status is assessed after attempting at least 4.0 credits (LWDs and WDRs are not considered as attempts)
- A minimum CGPA of 1.50 is required to be considered in “good standing”
- Once your status is assessed, you will be assessed again at the end of each session; after Fall/Winter (after April) and after Summer (late August)

Three types of GPA

- Grades are posted approximately one week after the completion of each course
- Course marks/grades are converted to grade point values
- Sessional GPA is based on a single session, either after Fall, Winter or Summer
- Annual GPA is based on the completion of the whole Fall-Winter Session
- Cumulative GPA is based on the entire academic history (with some exceptions)

Three types of academic standing

- In good standing 
- On academic probation 
- On academic suspension 

In Good Standing

- CGPA is at least 1.50
- Not on probation
- Not on suspension
- Not refused further registration

On Academic Probation

- CGPA is less than 1.50 after attempting to complete at least 4.0 credits
- Returning from suspension
- On probation and raise your CGPA to 1.50 or greater in the next session = “in good standing”
- Already on probation followed by another CGPA still less than 1.50, but a summer/annual GPA of 1.70 = continue on probation
- Remember your status is NOT assessed after the fall term or after the first term of the summer session

On Academic Suspension

- Already on probation and then CGPA less than 1.50 and annual (fall & winter) or summer sessional GPA less than 1.70 = suspended for 12 months
- Upon return from a suspension you will be placed back on probation
- If suspended a second time = three-year suspension
- If suspended a third time = refused further registration to the University
- CTEP subject to different regulations

Calculate your GPA

- Courses taken as non-degree student and non-degree visiting student are included in the CGPA
- Estimate your GPA before the end of the session
- Courses not included in the GPA calculation:
 - courses noted 'AEG'
 - transfer credits
 - courses taken on an LOP
 - courses designated as 'extra' ("EXT")
 - Credit/No Credit

GPA Values Chart

Percentage	Grade	Value
90 - 100	A+	4.0
85 - 89	A	4.0
80 - 84	A-	3.7
77 - 79	B+	3.3
73 - 76	B	3.0
70 - 72	B-	2.7
67 - 69	C+	2.3
63 - 66	C	2.0
60 - 62	C-	1.7
57 - 59	D+	1.3
53 - 56	D	1.0
50 - 52	D-	0.7
0 - 49	F	0.0



Use the GPA Calculator

- Go to www.utm.utoronto.ca/reg
- Under “Essentials” click on “CGPA Calculator”
- Sign in with your UTORid
- Create your own scenarios



Other reasons for wanting a high CGPA

- Getting into your program(s) of choice
- Many programs have minimum CGPA requirements such as:

Forensic Science	3.00 or greater
Commerce	2.88 or greater
Management	2.88 or greater
Biology	2.00
Computer Science	2.00
Criminology	2.00
Human Resources	2.00
Political Science	2.00
Psychology	2.00
Sociology	2.00

Selecting Programs

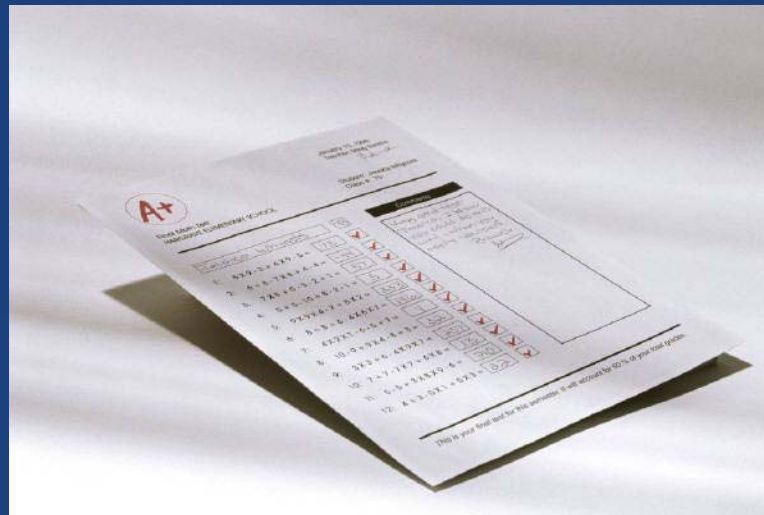
- Select program(s) after successfully completing 4.0 credits
- Select at least 1 specialist, 2 majors or 1 major & 2 minors
- Meeting the criteria early for program entry often gives you 'priority' when enrolling for upper-level courses, and gives you access to 'restricted' courses
- Applying for programs after second year can mean needing an even higher CGPA

- The actual process for selecting programs will be discussed in a future workshop (www.utm.utoronto.ca/navigate)
- See the UTM calendar regarding program entry requirements for limited programs

www.utm.utoronto.ca/regcal

Why else should I prepare early to make the grade?

- A minimum CGPA of 1.85 is required to graduate with an honours degree
- Professional and graduate schools require high GPAs – at least 3.00



- Minimum entry requirements for each graduate/professional school varies
- To avoid disappointment later, do your research NOW so that you can prepare and reach your long term goals



Examples of admission requirements for prof./grad. schools at U of T

- Law – www.law.utoronto.ca
 - At least 15.0 credits completed; most apply after completing a four year degree; min. B or 3.00 CGPA average
- Medicine – www.facmed.utoronto.ca
 - At least 15.0 credits completed; 3.60 min. CGPA for consideration (does not guarantee acceptance)
 - 2.0 credits in life sciences and 1.0 in social science/humanities

- **Dentistry – www.utoronto.ca/dentistry**
 - 15.0 credits completed; min. 3.00 CGPA; check website for a list of specific courses required
- **Pharmacy – www.pharmacy.utoronto.ca**
 - 5.0 credits completed including biology, chemistry, calculus and one full credit in humanities/social sciences; min. CGPA of 2.70
- **Teaching – www.oise.utoronto.ca**
 - Undergraduate degree required; preference to those with a 4-year degree
 - relevant experience; min. CGPA 3.00 or higher
- **Graduate School – www.sgs.utoronto.ca**
 - 4-year undergraduate degree with at least a mid-B/3.00 CGPA average in final year

For more information visit
Career Centre, Room 3094
Davis Building

www.utm.utoronto.ca/careers

How can I make the grade & be successful?

- Attend classes
- Monitor your own progress
- Use resources such as academic advising, Academic Skills Centre, Career Centre, dept. advisors/profs./TAs, Health & Counselling Services, and AccessAbility
- Reduce course load if you are feeling overwhelmed
- Make note of drop dates and deadlines
- Reduce work hours or don't work at all
- Set priorities



Conclusion



- Work smart
- Work hard
- Start now

