



Presentation to the Transportation & Parking Advisory Committee (TPAC) November 10, 2025

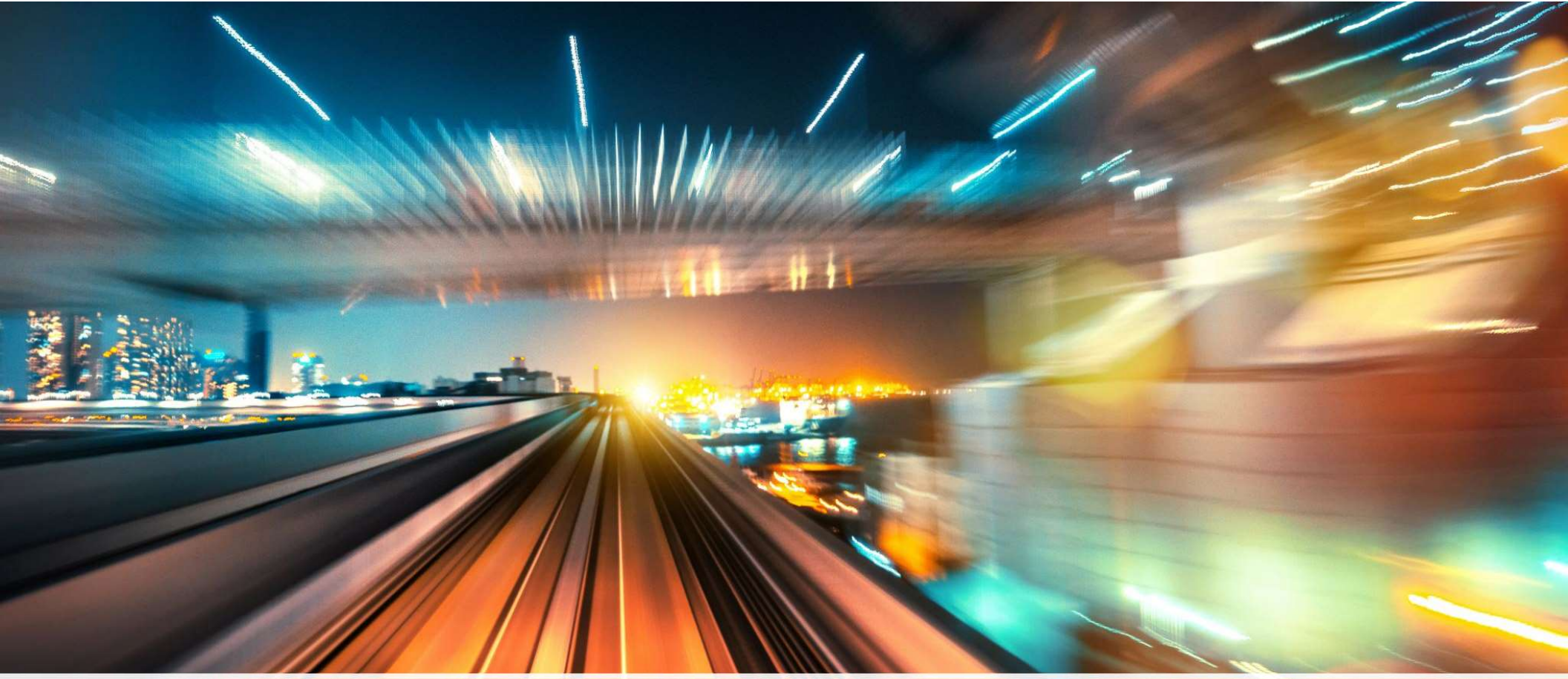
<https://www.utm.utoronto.ca/vp-principal/about-us>

Transportation & Parking Advisory Committee Membership & Attendees (2025-2026)

Kent Moore Chair - Faculty	Andrew Park U/G Student – UTMSU (President)	Rajas Dhamija U/G Student – UTMSU (VP External)	Owen (Rui) Zhang U/G Student – UTMSU (VP Internal)
Areej Al-Dailami Grad Student – UTMAGS (President)	Grace Ahadjie UTM Residence Council (President)	Deborah Brown CAO	Vicky Jezierski Hospitality & Ancillary Services
Megan Evans Hospitality & Ancillary Services	Tim Fricker Student Affairs	Brian Hoppie Parking & Transportation Services	Antonia Lo Budget, Planning and Finance
Ahmed Azhari FM&P	Deborah Fritz Campus Safety	Francesco Villiva Staff	

Agenda

- **Transportation Highlights**
- **Operational Highlights**
- **Financials**
- **Proposed Parking Rates for 2026-27**



Transportation Highlights

Public Transit

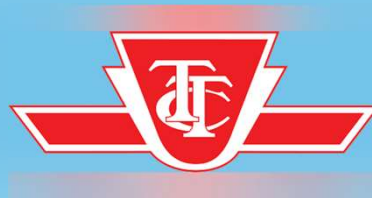


- 5 routes to campus
- New express route to Kipling via Burnhamthorpe
- Unlimited rides via Upass – Now integrated with Presto!



- Express route to Gateway Terminal
- 30-40 mins faster at no additional cost

Regional Connections



UTM Shuttle Bus

- Regular daily service to UTSG
- Tailored service to Sheridan



Active Transportation

UTM Bike Share



E-Bikes & Scooters





Operational Highlights

Highlights

Parking:

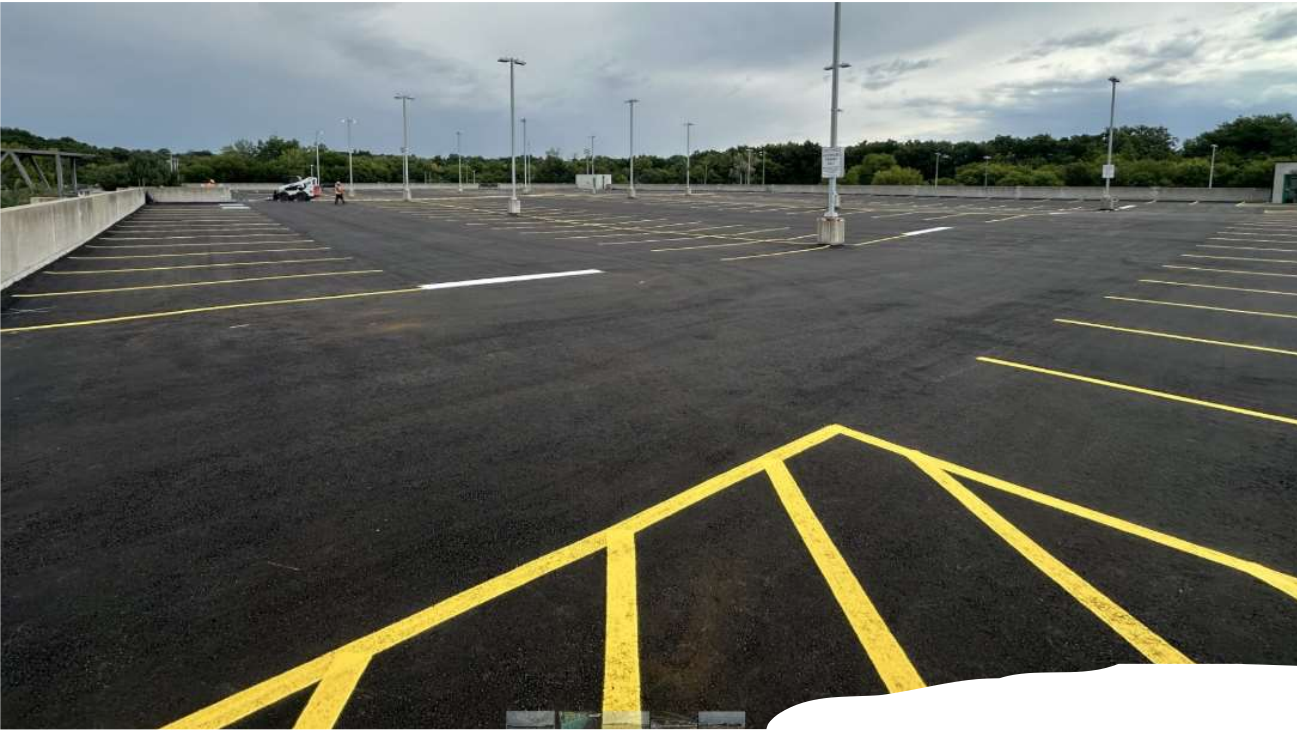
- Completion of CCT Garage Restoration
- Completion of P4 and P8 Parking Deck Waterproofing Repairs
- Introduction of CCT Garage Sessional Permit for students
- Introduction of paid Motorcycle parking

Shuttle Bus:

- Launch of enhanced FirstView App with new weekend live tracking
- Expansion of 24/7 Shuttle Bus Ticket Machine access
 - *Second added at UTM and one newly added at St. George*
- Review of additional Shuttle Bus features common in industry



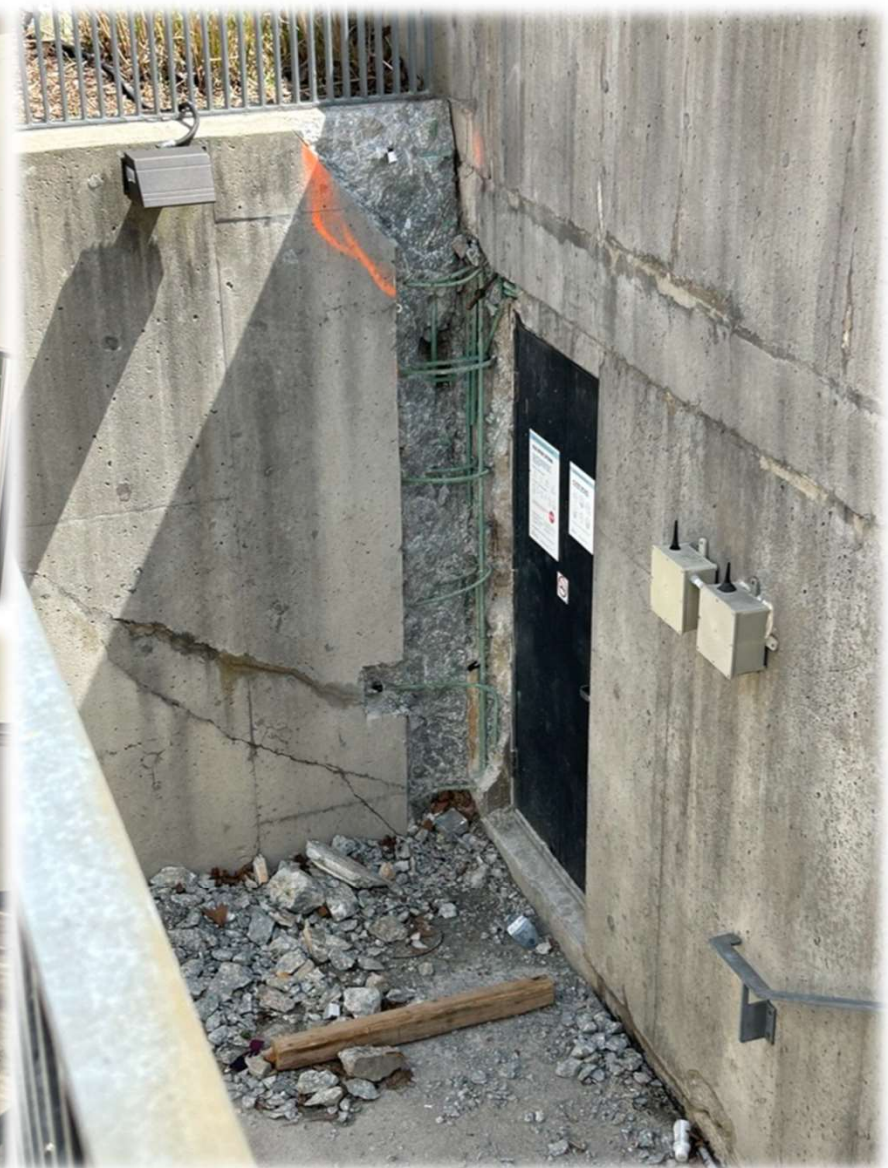




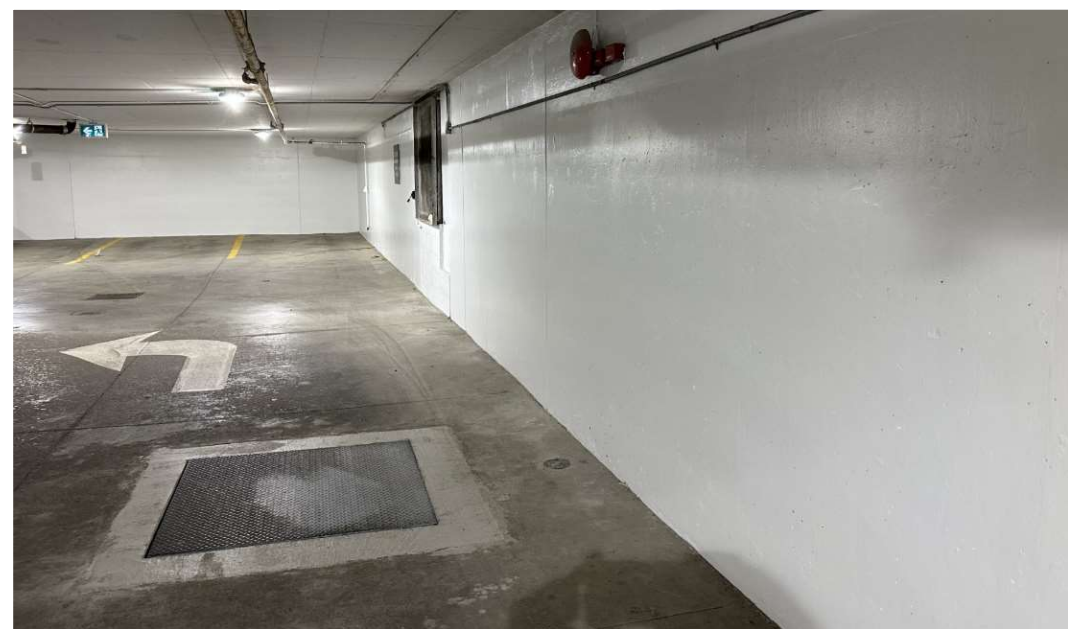
Parking Deck P8



Parking Deck P4



CCT Garage





SUSTAINABILITY

EV Charging:

Infrastructure to support up to 12 vehicles charging simultaneously. Prevented over 340,000 kg of GHG emissions to date. Equivalent of planting over 8,000 trees and letting them grow for 10 years.

LED Lighting:

All UTM parking structures are fully equipped with LED lighting. Estimated annual reduction of energy usage of over 71,000 kWh (compared to traditional lighting).

Single-Use Plastic:

The UTM Car Care Centre with its windshield washer fluid dispenser, has replaced over 65 single-use plastic jugs to date!

Volume	Jugs	Plastic	Estimated E P R (\$)	Carbon Offset (t)
245.8 L	65.0	7.8 kg	5.4	0.0



Current Permit Sales

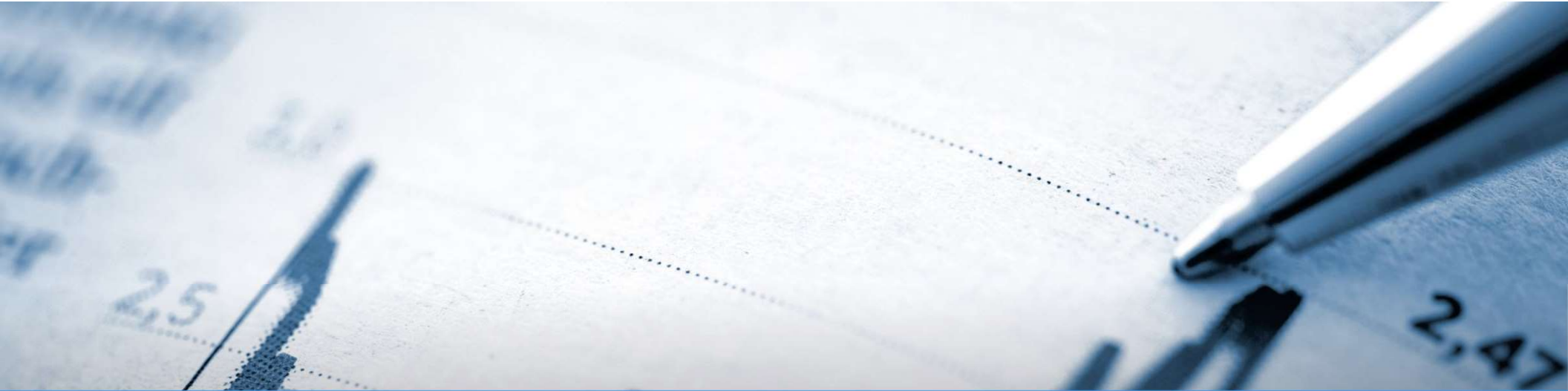
P1 – Sold Out

P4/P8 – Sold Out

P9 – Sold Out

P5 – Sold Out

CCT Garage – Sold Out!



Financials

Parking Ancillary

- Operate without subsidy
- Provide for all costs
- 10% reserve



Budget Guiding Principles

- 3% ATB annual increase, guiding principal established 2009
- Long term, spread out approach
- Enables the ancillary to manage anomalies without drastic/reactionary measures
- Allowed for implementation of less than planned increases for some permit types in 2022-23 as pandemic relief measure, and will allow for lifecycle maintenance and repairs without the need for significant additional increases

**University of Toronto Mississauga
Parking Services
Statement of Operating Results
in \$'s**

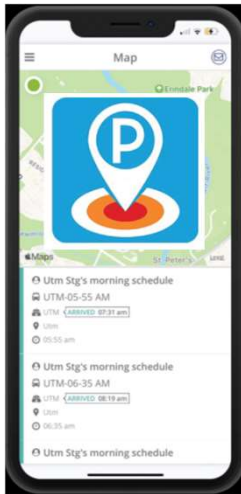
	2024-25 Actual	2025-26 Budget	2025-26 Forecast	2025-26 Variance	2026-27 Budget
Total Revenue	4,678,889	4,553,787	4,922,650	368,863	5,065,541
Total Expenditures	3,800,055	3,871,130	3,340,880	530,250	3,912,400
Operating Results Before Transfers	878,834	682,657	1,581,770	899,113	1,153,141

Proposed Price Increases for 2026-2027



	P4 P8	P9	P1	P5	CCT Garage	Resident
Proposed 2026 - 2027	2.5%	3%	3%	3%	3%	3%
Actual 2025-26	3%	3%	3%	3%	3%	3%

Hourly/Daily



Area	No Proposed Increase			Current Rates		
	1/2hr	Daily Max	Off Hours	1/2hr	Daily Max	Off Hours
CCT	\$0.00	\$0.00	\$0.00	\$3.25	\$20.50	\$10.50
P9	\$0.00	\$0.00	\$0.00	\$3.00	\$18	\$7.50
All Other	\$0.00	\$0.00	\$0.00	\$2.75	\$15.50	\$6.50

**University of Toronto Mississauga
Parking Services
Schedule of Rates
in \$'s**

	<u>2025-26</u>	<u>\$ Increase</u>	<u>2026-27</u>
CCT Garage (annual)	1,587.74	47.63	1,635.38
CCT Garage (Sessional 8m)	1,297.24	38.92	1,336.16
Lot P1 (annual)	1,318.63	39.56	1,358.19
Lot P5 (annual)	1,280.23	38.41	1,318.64
Lot P9 (annual)	1,016.67	30.50	1,047.17
Lots P4 and P8 (annual)	888.61	22.22	910.83
Student (sessional - Lots P4 and P8)	370.24	9.26	379.50
Resident (annual)	1,132.95	33.99	1,166.94
Afternoon (annual - after 3:30pm)	264.04	7.92	271.97
Commercial (annual)	1,503.33	45.10	1,548.43
Motorcycle (annual)	240.00	7.20	247.20

**University of Toronto Mississauga
Parking Services
Comparator Rates - 2025-26
in \$'s**

	<u>UTM</u>	<u>UTSC</u>	<u>St. George</u>	<u>York</u>	<u>McMaster</u>	Credit Valley Hospital
Reserved:						
Least expensive	\$1,280.23	\$1,548.79	\$3,360.00	\$1,397.76	\$1,500.00	\$831.50
Most expensive	\$1,587.75	\$2,013.41	\$3,720.00	\$1,797.12	\$1,560.00	\$831.50
Unreserved:						
Least expensive	\$888.58	\$1,750.13	\$2,940.00	\$1,057.92	\$672.00	\$831.50
Most expensive	\$1,318.64	\$2,350.44	\$4,800.00	\$1,088.64	\$1,320.00	\$831.50

*Satellite lot not located on campus. Shuttle bus required.

THANK YOU

Brian Hoppie
Operations Manager
Parking & Transportation Services
brian.hoppie@utoronto.ca