

## DISCOUNTS

### AT THE DENTIST



Save even more at over 800 dentists across Canada. Get dental services you need at a price you will love.

*Here's how it works...*

- 1 Find a participating dentist at [student.greenshield.ca](http://student.greenshield.ca)
- 2 At the end of your treatment provide the dentist with your GSC information. GSC will automatically calculate the applicable discount
- 3 GSC pays your dentist directly so you only pay your share of the cost (if any)

**COVERAGE THROUGH YOUR PLAN 70%**

**COVERAGE THROUGH THE NETWORK 30%**

**YOU'RE TOTALLY COVERED! YOU PAY NOTHING\***

### AT SHOPPERS DRUG MART

**Save 10% on President Choice®, no name®, Quo®, and Life Brand® products**

Present your Shoppers Drug Mart® card with your student ID. Visit [student.greenshield.ca](http://student.greenshield.ca) to get your card!

### ON GLASSES AND CONTACTS

**Save 10% online at [ContactsExpress.ca](http://ContactsExpress.ca)  
Using promo code **GSCVision****

**Save 30% on eye & sun glasses online at [Clearly.ca](http://Clearly.ca)  
Using promo code **GSCGLASSES30****

Or visit [student.greenshield.ca](http://student.greenshield.ca) to find a vision discount near you at The Bay Optical, Vision Clinic, Hakim Optical, and more!

### MORE DISCOUNTS

Save more with GSC on hearing aid devices, prescription medications, and LASIK MD. Visit [student.greenshield.ca](http://student.greenshield.ca) to learn more.

## 1 PLAN MEMBER ONLINE

Register for Plan Member Online Services where you can view your benefits, check your coverage, submit claims, sign up for direct deposit, view claim statements, and more!

*Please note you can register for Plan Member Online and submit claims after GSC has received your enrollment information from your institution.*

## 2 REGISTER: PLAN MEMBER ONLINE

- Visit [student.greenshield.ca](http://student.greenshield.ca) and click **Login**
- Select **Get Your Registration Key** and follow the instructions to get your registration key
- After receiving your registration key, return to the Login page. Enter your Plan Member ID (UTM-student number-00) and Registration Key, then click **Continue with Registration**
- Once registered, return to the Login page. Enter your new username and password, then click **Login**

## 3 DOWNLOAD: GSC MOBILE APP

After registering for plan member online, download the GSC On the Go app to access your benefits plan on your mobile device.

**Download the app to:**

- Find a health care provider near you
- See whether your drug is covered, how much will be covered
- Show your all-in-one benefit and travel ID card
- View benefits coverage and see how much will be paid



2020-2021

# WE'VE GOT YOUR HEALTH COVERED



utm su

University of Toronto Mississauga  
Students' Union

LOCAL 109 OF THE CANADIAN FEDERATION OF STUDENTS

**HEALTH & DENTAL CARE PLAN**

**UTMSU.CA/HEALTH**

NATIONAL STUDENT  
HEALTH  
NETWORK

gsc  
green shield canada

# WHO IS COVERED

UTM undergraduate students, who are enrolled in a minimum of 3 full courses in either the Fall or Winter session and have been assessed the health and dental plan fees, are automatically enrolled.

# HOW TO OPT IN

Students with families may opt in a spouse/common law partner and/or children. Additional plan fees apply.

An opt in application must be submitted within the student's first eligible opt in term. Visit the UTMSU office or [utmsu.ca/health](http://utmsu.ca/health) or for more information.

# HOW TO OPT OUT

Students who have comparable health and dental coverage may opt out of the health and dental plan by providing sufficient proof. An opt out application must be submitted within the student's first eligible opt out term, on an annual basis. Visit the UTMSU office or [utmsu.ca/health](http://utmsu.ca/health) or for more information.

# COVERAGE CHANGE PERIODS

- Fall Session (opt out, opt in, family opt in): **September 1 - September 30, 2020**
- Winter Session (opt out, opt in, family opt in for new January academic starts): **January 1 - January 31, 2021**

# ACCESSING YOUR COVERAGE

Your Insurance Provider:  
**Green Shield Canada**

Your GSC ID:  
**UTM student # - 00**

Example: UTM1001234567-00

Note: your health and dental plan benefits booklet located at [student.greenshield.ca](http://student.greenshield.ca) supercedes all information printed in this publication.  
\* Based on all covered dental basic services as described in the benefits plan booklet.

# BENEFITS SUMMARY

This is a brief outline of your coverage. For complete benefits information visit [student.greenshield.ca](http://student.greenshield.ca)

## HEALTH - UP TO \$5,000

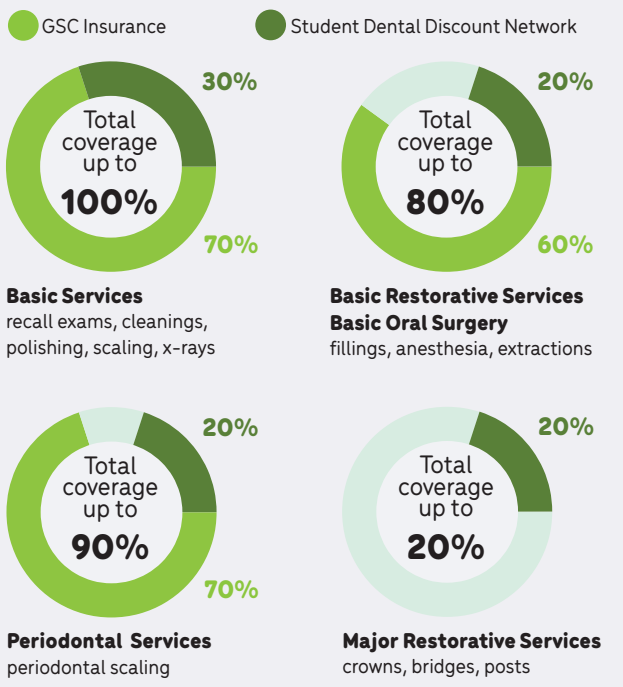
Health Benefits	Per Visit/ Purchase	Per Policy Year
PRESCRIPTION DRUGS	90%	\$5,000
VACCINES Including HPV vaccines	90%	\$200
ORAL & DEVICE CONTRACEPTIVES	100%	\$250
DIABETIC TESTING AGENTS	100%	\$1,000
ACUPUNCTURIST REGISTERED MASSAGE THERAPIST Requires referral from MD or NP	\$30	20 visits
CHIROPRACTOR	\$30	20 visits
CHIROPODIST PODIATRIST	\$30	20 visits
SPEECH THERAPIST	\$30	20 visits
NATUROPATH HOMEOPATH	\$30	20 visits
PHYSIOTHERAPIST	\$30	20 visits
PSYCHOLOGIST, COUNSELLOR, MASTER OF SOCIAL WORK, SOCIAL WORKER, PSYCHOTHERAPIST	\$125	20 visits
ACCIDENTAL DENTAL	100%	reasonable and customary charges
EMERGENCY TRANSPORTATION	100%	reasonable and customary charges

**PLUS** hospital semi-private room, hearing care, footwear, blood glucose meter & supplies, bra (mastectomy), compression stockings, stump socks, wigs, tutorial benefit, \$7,500 accident coverage, and more.

# QUESTIONS?

Download the **mobile app**, call **1-888-711-1119**, or visit [student.greenshield.ca](http://student.greenshield.ca)

## DENTAL - UP TO \$800



## VISION - UP TO \$150

Vision Benefits	Per Visit/ Purchase	Amount Covered
EYE GLASSES AND CONTACTS Every 24 consecutive months	100%	\$150
EYE EXAM Every 24 consecutive months	100%	included in overall \$150 maximum

## TRAVEL - UP TO \$5,000,000

Travel Coverage	Amount Covered	Eligible
TRAVEL HEALTH COVERAGE	120 days	Per Trip
EMERGENCY SERVICES	\$5,000,000	Per benefit year
REFERRAL SERVICES	\$50,000	Per benefit year