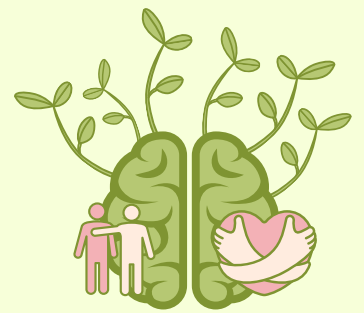




# PROJECT RAISE

## Research and Practice Partnership: Building Awareness and Increasing Social-Emotional Capacity in the Early Years

Promoting children's well-being and social emotional capacities, such as emotion regulation and empathy, are of utmost importance to the future of our society. Already existing concerns about child well-being have been exacerbated by the COVID-19 pandemic, which are compounded by the growing need for increased integration of cutting-edge social-emotional research into care for children and families.



**RAISE aims to address these concerns through 2 complementary objectives.**

### OBJECTIVE 1 PEEL REGION NEEDS ASSESSMENT

### OBJECTIVE 2 CAREGIVER & EDUCATOR TRAINING



**GOAL**  
To gain better understanding of the current strengths and needs of children ages 0-8 and their families living in the Peel region.



**GOAL**  
To support caregivers' and educators' capacities to apply social-emotional concepts for children ages 3-8.

The needs assessment informs understanding of existing strengths and needs through two methods:



- Online caregiver surveys
- Virtual one-on-one caregiver and educator interviews



Our training takes a clinical-developmental approach to address needs by building upon strengths, and emphasizes 3 components of social-emotional development:

- Emotion regulation
- Empathy for others
- Empathy for self



**DETAILS**  
In the surveys, caregivers report on child social-emotional development, caregiver and child well-being, impacts of COVID-19, and access to services. In the interviews, caregivers and educators share insights about current areas of strength and areas for growth in the family, community, and Early Years and Child Care sector.



**DETAILS**  
The training is delivered online using asynchronous, self-paced video sessions and synchronous live video group sessions facilitated by the CCDMP team. Each training session is tailored to meet the needs of each community, in consultation with members of these communities.

### PROJECT OUTCOMES THE DIFFERENCE WE HOPE TO MAKE



Improved understanding of current areas of strength and areas of need in children and families in Peel.

1



Caregivers and educators supported in providing care to children that builds upon strengths to support needs.

2



Increased communication between research, practice, and policy experts and leaders in the community.

3

### OUR TEAM

The RAISE Training Advisory Committee is co-chaired by the CCDMP and Early Years and Child Care Services, Region of Peel, and plays an essential role in the development, implementation, and evaluation of our objectives along with 2 working subcommittees (the Needs Assessment Subcommittee and Training Subcommittee).



Our community partners are Region of Peel, Child Development Resource Connection Peel, Dixie Bloor Neighbourhood Centre, EveryMind Mental Health Services, and PLASP Child Care Services.



Please note that all RAISE training materials are copyright protected (Malti, 2022). No part of the RAISE training may be reproduced, distributed, shared, or transmitted in any form or by any means for nonprofit or profit purposes. (Malti, T. (2022). *RAISE Training Materials*. Unpublished materials by Tina Malti. Copyright by T. Malti, 2022.)



Social Sciences and Humanities Research Council of Canada

This project has been approved by the University of Toronto Research Ethics Board and is possible through funding from the Social Sciences and Humanities Research Council (SSHRC) Partnership Development Grant awarded to Dr. Tina Malti (director of the CCDMP and professor, department of psychology, University of Toronto).