

Gani CABEZAS

Department of Anthropology, University of Toronto Mississauga

We wish to acknowledge this land on which the University of Toronto operates. For thousands of years, it has been the traditional land of the Huron-Wendat, the Seneca and the Mississaugas of the Credit. Today, this meeting place is still the home of many Indigenous people from across Turtle Island and we are grateful to have the opportunity to work on this land.

Introduction

- The Schreibers, a British-Canadian family, lived in three houses on a portion of the current University of Toronto Mississauga (UTM) campus property from the late 19th century to the early 20th century. For over a decade, the UTM archaeological field school has been excavating at two sites (AjGw-534 and -535) associated with these houses.
- To date, the assemblage of metal artifacts from the field school has not been researched as extensively as other artifact material types.
- This study provides a comprehensive overview of metal artifacts from the field school excavations to guide future research efforts within the contexts of 19th to 20th-century metal use and Euro-Canadian domestic life.

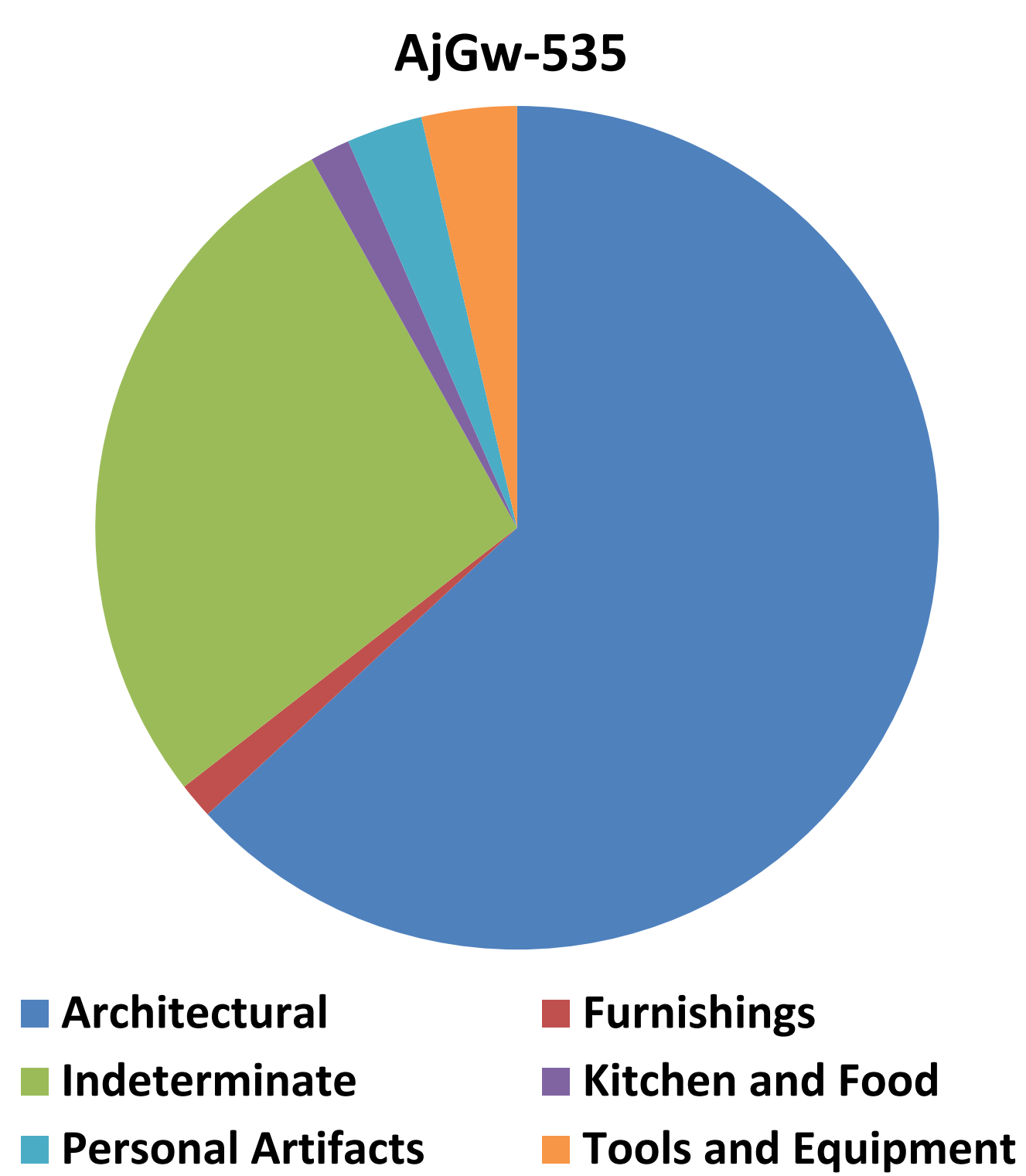
Reviewing the Collection

- Metal artifacts from 11 field school seasons had previously been stored together by site but not yet fully sorted for artifacts with high interpretive potential. This study further sorted artifacts from the collection for analysis and identification where possible.
- This overview coordinated with—but will not address—artifacts covered by other studies: complete toys (Dasilva Furtado et. al. 2020; Ling 2022), kitchen utensils, and lighting devices (ongoing research by Maher and Guayasamin).
- Artifacts from this study were analyzed with reference to similar North American archaeological sites, as well as mail order catalogues from the period like Montgomery Ward and Co. (1895) and Sears, Roebuck, and Co. (1902).



Figure 3. Pulley-rack marked "JUDD PAT. 1873" and illustration of Judd's original 1869 patent design improved in 1873 (US88179A) (left); candle holder (center); curtain ring (right). Photos by Nina Le.

Figure 1. Breakdown of metal artifact classes in AjGw-535 (left) and -534 (right).



Case Study 2: Personal Artifacts

- Cast iron toy fragments**—miniature sad iron trivets (Figure 4); the roof, base, and side wall of a coin bank; and a wheel type for toy chimes and carriages (Figure 5). Barton of Gong Bell Manufacturing Co. patented chime toys in 1872 in Connecticut.
- Musical instruments** like violins became more accessible due to portability, mass production, and wider distribution of music manuals for self-study (Durkin 2021: 60).
- Brooch** of a violin family instrument (Figure 6) suggests the owner was a musician. Violin-playing was considered a masculine hobby in contrast to piano-playing (Durkin 2021: 60).
- Harmonica** with 10 notes only plays one scale as a basic type. The harmonica reed in the collection appears small, perhaps intended for children (Figure 6).



Figure 4. Miniature sad iron trivets from AjGw-535 (left, center; photo by Nina Le) and comparative illustration from Montgomery Ward and Co. 1895 catalogue.

Case Study 1: Furnishings

- Curtain fixtures**, all brass or non-ferrous, from AjGw-535 (Figures 2 and 3).
- Marked pulley-rack** from AjGw-534 (Figure 3) attributed to an 1873 patent by New York manufacturer Hubert L. Judd Co., a branch of a family company from Connecticut. An older pulley rack patented in 1869 by British manufacturer Loach and Clarke from Birmingham was recovered from AjGw-535 (Brand 2018: 22).
- Candle holder** with dried wax from AjGw-534 (Figure 3).



Figure 2. Extension pole bracket (left; photo by Nina Le) with comparative illustration from Sears, Roebuck, and Co. 1902 catalogue (right).

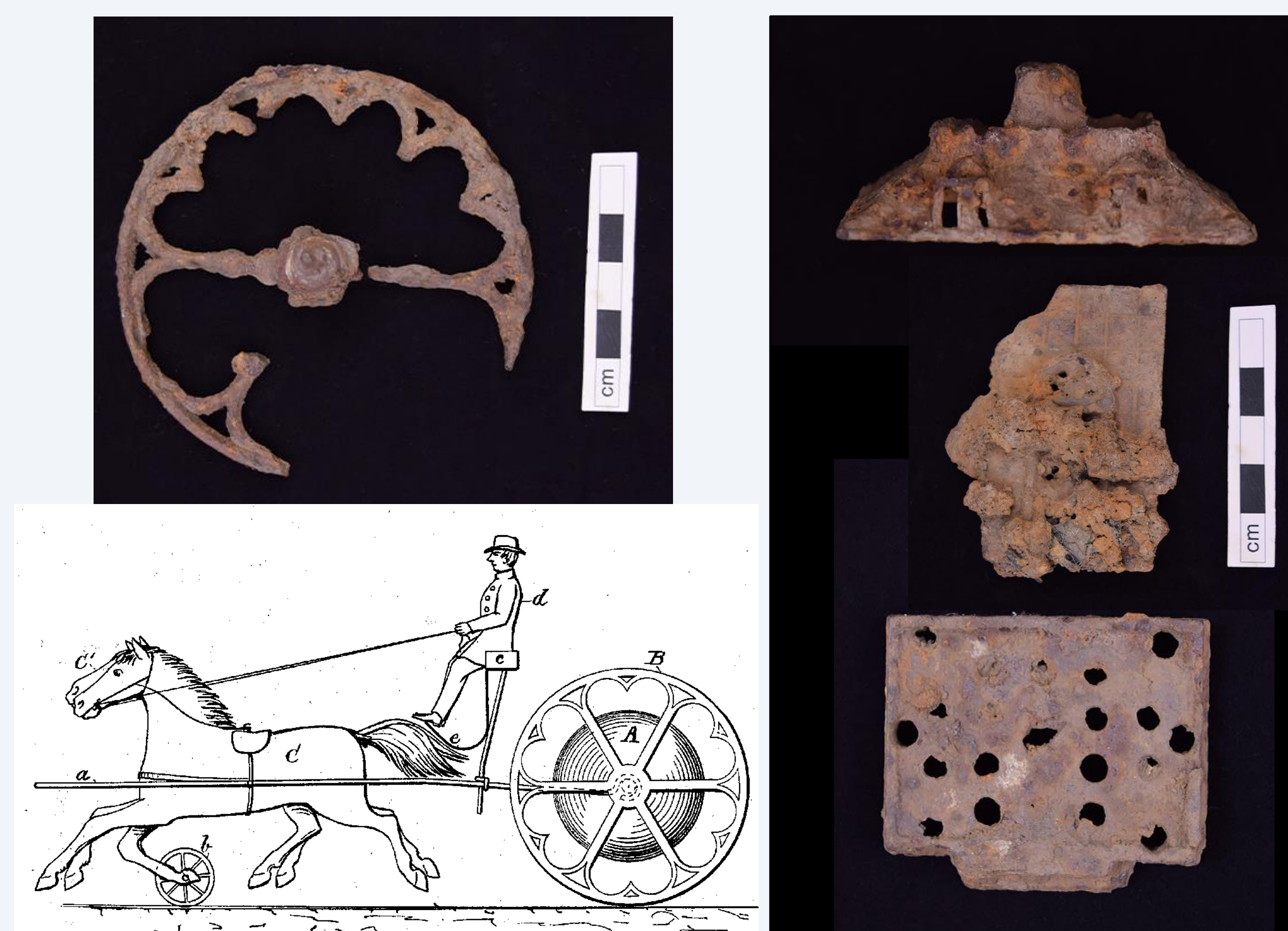


Figure 5. Toy wheel (top left); illustration of Boeren's 1874 improvement (US150792A) of Barton's 1872 chime toy patent (bottom left); coin bank roof, side wall, and base (right). Photos by Nina Le.



Figure 6. Brooch of an instrument from the violin family (left); harmonica reed with 10 notes (right). Photos by Nina Le.

Case Study 3: Tools and Equipment

- Square-polled axe heads** (Kenyon 1984: 16). Mushrooming and warping along polls and eyes suggest use for hammering and wedging as opposed to chopping. A **mop head** and **small wrench** were also found. No maker's marks were visible (Figure 7).
- House appliance parts** included several stove parts—a stove leg (Figure 7), tray, and lifter from AjGw-535, and a pot-bellied stove top and chimney from AjGw-534.
- Horse harness equipment** made from non-ferrous metals found at AjGw-535 (Figure 7).



Figure 7. Axe head (top left), mop head (top center), wrench (top right), stove leg with moulder's mark "P" (bottom left), horse harness equipment (bottom right). Photos by Nina Le and Ya Qi Mo.

Discussion

- The Schreibers likely had access to mass-produced American cast iron and brass products. They may have also brought smaller artifacts from travels to England.
- More artifacts were identified from AjGw-535 than AjGw-534.
- Architectural artifacts like nails and hardware from doors and fences dominated the assemblages of both sites. More personal artifacts and furnishings were found on AjGw-535 in association with one of the houses; more kitchen and food artifacts (e.g. tin cans) were found on AjGw-534 in association with a barn and midden.
- Corrosion and fragmentation leave the function of many metal artifacts in the assemblage undetermined until further research is conducted.

Acknowledgments
This study would not have been possible without the guidance of Dr. Trevor Orchard, Dr. Michael Brand, and Dr. Sarah Ranlett. Special thanks to my Work Study peers and to Nina Le and Ya Qi Mo for their artifact photography.

References
Brand, Michael. 2018. Schreiber Wood Project Final Report for the 2016 Field Season. Report on file with Archaeology Program Unit, Ontario Ministry of Tourism, Culture and Sport, Toronto (PIF# P160-0004-2016).
Dasilva Furtado, Andrew, Sarah Ranlett, Michael Brand, and Trevor J. Orchard. 2020. Playing Through History. Poster presented at the Ontario Archaeological Society, Toronto, Ontario.
Durkin, Rachel. 2021. The Adventure of the Stradivarius: Violins in the Work of Arthur Conan Doyle and William Crawford Honeyman. *Journal of Victorian Culture* 26(1): 54-71.
Kenyon, Thomas. 1984. Nineteenth Century Axes. *KEWA (Newsletter of the London Chapter, Ontario Archaeological Society)* 84(6): 16.
Ling, Leann. 2022. Considering Childhood Experiences in a Late 19th-Century Settler-Colonial Household: Children's Toys from the Schreiber Wood Project. Poster presented at the Ontario Archaeological Society, Toronto, Ontario.
Montgomery Ward and Company. 1969 [1895]. *Montgomery Ward and Co. Catalogue and Buyer's Guide No. 57, Spring and Summer 1895*. Montgomery Ward and Company, Chicago, Illinois. 1969 facsimile ed. Dover Publications, New York.
Sears, Roebuck and Company. 1986 [1902]. *The Sears, Roebuck Catalogue*. Sears, Roebuck and Company, Chicago, Illinois. 1986 reproduction. Crown Publishers, Inc. New York.