

Did you miss last year's record-breaking production of  
**THIRTEEN HANDS?**

Well now's your chance!



Theatre Erindale's hit production of *Thirteen Hands* is being re-mounted for the Hart House Theatre season in downtown Toronto.

**TWO WAYS TO SEE IT:**

- ❖ **PREVIEWS** at UTM in the Multimedia Studio Theatre ("MiST"), CCT Building (at regular Theatre Erindale prices including Membership discounts!):  
**February 23-24, 8:00PM; Box Office 905-569-4369**
- ❖ **PERFORMANCES** downtown at Hart House Theatre, 7 Hart House Circle, University of Toronto (reserved seats \$12 / \$20):  
**March 8-10, 8:00PM, March 10 2:00PM; [UofTTix.ca](http://UofTTix.ca) 416-978-8849**

*"Neither of us can remember the last time we gave a production a standing ovation!... We left with lumps in our throats and tears in our eyes – in short, we LOVED it!" – Audiences*

Written by Carol Shields, with original music by Christopher Dawes  
directed by Ron Cameron-Lewis



Theatre Erindale presents  
**BEAUMONT & FLETCHER**

## The Maid's Tragedy



Directed by Patrick Young

Original Music by Christopher Dawes

Choreography by Sarah Jane Burton

Costumes by Joanne Massingham

**ERINDALE STUDIO THEATRE**

**February 8-10, 13-17, 2007**

**\$9-\$14**

What is the difference between a ruler and a tyrant?  
And who will be compelled to do something about it?

[www.theatreerindale.com](http://www.theatreerindale.com)

**905.569.4369**

## Message from the Acting Dean, University of Toronto Mississauga

It is my great pleasure to welcome you to the 61<sup>st</sup> production of Theatre Erindale. For over thirteen seasons now, Theatre Erindale has provided both first-rate training for its students and first-rate entertainment for the Mississauga community at large.

The Theatre and Drama Studies Program is the only one in Canada to combine the professional actor-training of a leading college with the broad academic perspective of a great university. It has extremely high admission standards, with talented and dedicated students drawn from all over the country and beyond.

I thank the faculty, staff and students of the Theatre and Drama Studies Program both at Sheridan and at UTM for their vision and enthusiasm. And I thank our Theatre Erindale Patrons, Members, and single ticket purchasers for their current and continued support. Enjoy!!

Cordially,

Charles Jones

## From the Artistic Director ...

Theatre Erindale had a banner year last season. We celebrated, among other distinctions, the setting of three new attendance records for our shows, the fifteenth birthday of our joint Sheridan-UTM actor-training program, and the nomination of two of our graduates for Outstanding Performance in Toronto's professional Dora Mavor Moore Awards. It's a growing tradition of excellence to which you – our audiences – have made a vital contribution from the very beginning. Thank you!

Part of that tradition is our commitment to taking you places you've never been before. Whether it's producing a classic you may have read or heard about but never seen, revisiting an old favourite with fresh young eyes, or creating something completely new, we promise to keep surprising you.

For 2006-2007, most of our plays deal in some way with resisting the abuse of power. Young women fight for life and dignity against a giant corporation, outraged subjects turn on a king who has gone too far, a pair of teen lovers finds hilarious ways to dodge their parents' materialistic ambitions, a family of brilliant entertainers struggles to stay on top. And as the little group of Calgary women wait for their famous parade, they do everything they can to resist Hitler.

Truly, the love of power is "the Demon of Men". We're excited about this season. Once again we're going to do everything in *our* power to make it an inspiring one for you, too. Thank you for coming, and enjoy the show!

Sincerely,



**P.S.:** Don't miss the special re-mount of last season's record-breaking *Thirteen Hands*, at UTM's Multimedia Studio Theatre (MiST) February 23-24, or at Hart House Theatre in downtown Toronto March 8-10.

2004/2005	<i>The Play's the Thing</i>	Skinner, Durang, Frayn	Paul Brown
	<i>Alarum Within: theatre poems</i>	Kimmy Beach (adap. Company)	Ralph Small
	<i>Unity (1918)</i>	Kevin Kerr	Patrick Young
	<i>Women Beware Women</i>	Thomas Middleton	Sue Miner
2005/2006	<i>Love's Labour's Lost</i>	William Shakespeare	Heinar Piller
	<i>Picnic at Hanging Rock</i>	Lady Joan Lindsay	Laurence Follows
		(Laura Annawyn Shamas)	
	<i>The Immigrant Years</i>	The Company	Alex Fallis
		(after Broadfoot)	
	<i>Thirteen Hands</i>	Carol Shields & Christopher Dawes	Ron Cameron-Lewis
	<i>The Dispute</i> and	Marivaux	Mimi Mekler
	<i>The Constant Actors</i>	(trans. Watson & Lester)	
	<i>The Country Wife</i>	William Wycherley	Patrick Young



## THEATRE ERINDALE PRODUCTION HISTORY

Year	Title	Author	Director
1993/94	<i>The Farm Show</i> <i>Pericles, Prince of Tyre</i>	Theatre Passe Muraille William Shakespeare	Patrick Young Mimi Mekler
1994/95	<i>1837: The Farmers' Revolt</i> <i>Lion in the Streets</i> <i>The Tricks of Scapin</i> <i>The Relapse</i>	Theatre Passe Muraille Judith Thompson Molière John Vanbrugh	Terry Tweed Katherine Kaszas Mimi Mekler Patrick Young
1995/96	<i>Six War Years</i> <i>The Rimers of Eldritch</i> <i>Les Belles-Soeurs</i> <i>The Revenger's Tragedy</i>	Barry Broadfoot (adap: Company) Lanford Wilson Michel Tremblay Cyril Tourneur	Ron Cameron & Dia Frid Jim Millan Mimi Mekler Patrick Young
1996/97	<i>Story Theatre</i> <i>The Gut Girls</i> <i>7 Stories</i> <i>Mycenae (from The Greeks)</i>	Paul Sills/Grimm Brothers Sarah Daniels Morris Panych John Barton, et al	Mimi Mekler Katherine Kaszas Patrick Young Simon Johnston
1997/98	<i>A Harvest Yet to Reap</i> <i>The Hot L Baltimore</i> <i>Vital Signs</i> <i>Midsummer Night's Dream</i>	Savage & Wheeler (adap: Company) Lanford Wilson Jane Martin William Shakespeare	Mimi Mekler David Ferry Patrick Young Greg Peterson
1998/99	<i>Lovers in Dangerous Times</i> <i>Fen</i> <i>The Women</i> <i>The Hypochondriac</i>	Shakespeare & Friends Caryl Churchill Clare Boothe Luce Molière (adapted by Alan Drury)	Ron Cameron Brian Richmond Patricia Hamilton Patrick Young
1999/2000	<i>The Millennium Project</i> <i>Pride's Crossing</i> <i>Lysistrata</i> <i>Hard Times</i>	Dennis Hayes & Company Tina Howe Aristophanes (trans: Nicholas Rudall) Dickens (adap: Stephen Jeffreys)	Dennis Hayes Brian Richmond Vinetta Strombergs Christina James
2000/2001	<i>Love's Fire</i>  <i>Once Upon Our Time</i> <i>The Comedy of Errors</i> <i>En Pièces Détachées</i> <i>All's Well That Ends Well</i>	Bogosian, Finn, Guare, Kushner, Norman, Shange, & Wasserstein Dennis Hayes & Company William Shakespeare Michel Tremblay William Shakespeare	Ralph Small  Dennis Hayes Ron Cameron Duncan McIntosh Mimi Mekler
2001/2002	<i>Glengarry Glen Ross</i> <i>and Top Girls</i> <i>The Loyalist Project</i> <i>The Children's Hour</i> <i>The Beaux' Stratagem</i> <i>The Man of Mode</i>	David Mamet Caryl Churchill Ron Cameron & Company Lillian Hellman George Farquhar George Etherege	Duncan McIntosh and Zaib Shaikh Ron Cameron Jane Carnwath Mimi Mekler Patrick Young
2002/2003	<i>The Aberhart Summer</i> <i>Brass Buttons &amp; Silver Horseshoes</i> <i>Les Liaisons Dangereuses</i> <i>Les Belles-Soeurs</i> <i>'Tis Pity She's a Whore</i>	Conni Massing (after Powe) The Company (after Granfield)  Christopher Hampton Michel Tremblay John Ford	Katherine Kaszas Mimi Mekler  Patrick Young Vinetta Strombergs Greg Peterson
2003/2004	<i>The Libation Bearers</i> <i>The Golden Ass</i>  <i>The Vic</i> <i>Pride and Prejudice</i> <i>Jane Eyre</i>	Aeschylus (trans. Tony Harrison) The Company (after Apuleius)  Leanna Brodie Austin (adap. Christina Calvit) Brontë (adap. Robert Johanson)	Heinar Piller Ron Cameron-Lewis and Dia Frid  Rebecca Brown Patrick Young Ralph Small

## About The Maid's Tragedy

### *The Divine Right of Kings ...*

“Divine Right” is the doctrine that monarchs derive their right to rule directly from God and are accountable only to God.

James I, King of England and Scotland when Beaumont and Fletcher wrote *The Maid's Tragedy*, was a leading proponent of this doctrine. The naïve character of Amintor in the play believes in it so deeply that it becomes the root cause of all his moral dilemmas and ultimately his death. On the other hand, those who in real life were skeptical of this doctrine – like Melantius in the play – believed that it could only lead to the abuse of power. They would eventually execute James' son, Charles I, for that very offense. Thereafter the concept ceased to have relevance in England. Yet, despite its unfamiliarity to a North American audience, variations of the idea have supported the throne of every tyrant before or since.

### *The Play and its Setting ...*

While the Mediterranean provides many a Jacobean play with both added exoticism and a safe distance from the politics of the English court, the romantic use of the City of Rhodes for *The Maid's Tragedy* is virtually unique. The story of Beaumont and Fletcher's masterpiece is entirely fictional, and, apart from a few incidents that do have a literary precedent, completely original to the authors. They have created an imaginary world steeped in classical lore, conditioned by the practices of Jacobean society, yet ruled – however perversely – by the love-and-honour value system of the Age of Chivalry, as depicted in the Arcadian romances of Sidney and Spencer familiar from their boyhoods. And for this, Rhodes is the perfect setting.

The Island of Rhodes is the easternmost of the Greek archipelago, just off the coast of Persia (now Turkey). During Hellenistic and Roman times, it was a great centre of Mediterranean learning, art, and commerce. Following a thousand years of Byzantine rule, two centuries of Crusades, and the demise of the Templars, the Knights Hospitaller migrated from the Holy Land to take over the island in 1309. It was during the next two hundred years that many of its capital city's most magnificent surviving monuments – including the fortifications that figure prominently in the *The Maid's Tragedy* – were constructed. The fortified medieval City of Rhodes, founded in legend by the sun god Helios, with its entire history beautifully preserved, remains a World Heritage Site to this day.

It is these associations that Beaumont and Fletcher meant to evoke in the imaginations of their first audiences. For our production we have therefore attempted to create an environment in which elements from Asia Minor are fancifully blended with those of European and Byzantine derivation and dotted with the remnants of the classical past.

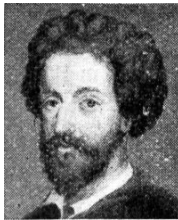


## The Authors ...

Beaumont and Fletcher actually wrote only a handful of plays together in just half a dozen years. Yet their influence was so far-reaching that they gave their names to almost an entire generation of collaborative Stuart playwrighting. For two centuries and more their work was often preferred to Shakespeare's.



Francis Beaumont, born 1584, was the third son of a Justice of the Court of Common Pleas, and studied at both Oxford and the Inner Temple. He wrote poetry, hung out at the Mermaid Tavern, befriended Ben Jonson, and by 1607 had written the witty send-up *The Knight of the Burning Pestle* – about the time he met and begun collaborating with Fletcher. In 1613 he married an heiress and left the theatre, only to die of a fever three years later.



John Fletcher, born 1579, was the son of a clergyman who became Bishop of London and chaplain to the queen. After attending Cambridge, he, too, gravitated to the Mermaid Tavern, where he no doubt met his collaborators Shakespeare (*Henry VIII* and *The Two Noble Kinsmen*), Massinger, Middleton, Rowley, and Jonson, as well as Beaumont. The team apparently took over from Shakespeare as chief dramatists for the King's Men around 1609, and Fletcher continued alone after Beaumont's sudden retirement, becoming sole or part author of at least forty-two plays before his own death of the plague in 1625.

The famous pair shared lodgings in the Bankside and even their clothes, and much paper has been wasted attempting to disentangle the respective contributions of the partners. Their works premiered at the indoor theatre in the Blackfriars, and featured mellifluous verse, spicy sex, and sensational situations. Together they wrote the great tragicomedies *Philaster* (c.1609) and *A King and No King* (1611), as well as *Cupid's Revenge* (c.1611), *The Coxcomb* (1612), *The Scornful Lady* (c.1613) and *The Captain* (1613). *The Maid's Tragedy* (c.1610-11) – their only tragedy – is also considered their masterpiece. Collected editions came out under their names in 1647 and 1679, and such was their continuing popularity and the strength of their reputation as a team that no fewer than 53 plays were included – most of which were actually collaborations between Fletcher and other authors.

## Production History ...

*The Maid's Tragedy* was written at a time when the divine right of kings was a hot topic in the court of James I. It is therefore amazing that it escaped censorship, despite its foreign setting. The play quickly became a popular fixture in the active repertoire – though sometimes in adapted form – for well over two hundred years. Thereafter, the lurid side of its relationships proved too much for the late Victorians, and it disappeared for another century. By the end of the millennium, however, in tandem with an overall reconsideration of the works of Beaumont and Fletcher, the tragedy had resurfaced as one of four selections for the first full season of Shakespeare's New Globe in London, as well as in noteworthy productions by the Royal Shakespeare Company and the Glasgow Citizens' Theatre (with Pierce Brosnan as the King!). Since then the trickle has threatened to become a flood. *The Maid's Tragedy* has been produced repeatedly in London as well as in New York, Washington, Syracuse, and Kansas City. We do not, to date, know of any other productions in Canada.

– Patrick Young

## Theatre and Drama Studies

### FACULTY & STAFF

2006/2007

Pamela Armah .....	UTM Assistant to the Chair, English & Drama
Bruce Barton .....	Drama Studies
Suzanne Bennett .....	Tutorials
Kevin Bowers .....	Stage Manager
Sarah Jane Burton .....	Movement, Dance, Choreographer
Ron Cameron-Lewis .....	Voice and Text, Styles, Director
Rod Ceballos .....	Guest Director
Brian Conrad .....	Stage Manager
Nancy Copeland .....	Drama Studies
Christopher Dawes .....	Composer, Music Director
Teodoro Drangonieri .....	Character Mask
Scott Duchesne .....	Drama Studies
Darcy Folk .....	Wardrobe Assistant
Laurence Follows .....	Acting Technique, Styles
Dia Frid .....	Camera, Styles
Michael Goran .....	Improvisation
Dennis Hayes .....	Tutorials, Styles, Stagecraft
Rebecca Hodgson .....	Guest Costumer
Diane Janzen .....	Sheridan Administrative Support
Stephen Johnson (UTM Director of Drama Studies, Executive Producer) .....	Film, Drama Studies
John Karr .....	Singing, Music Director
Jennifer Lenoir (MiST Technical Director) .....	Production
Daniel Levinson .....	Stage Combat, Fight Director
Joanne Massingham (Head of Wardrobe) .....	Stagecraft, Production
Debra McKay .....	Theatre Organization, Stage Management
Catherine McNally .....	Tutorials
Mimi Mekler .....	Mask, Clown
Denise Norman .....	Voice and Text, Tutorials
Robert Ormsby .....	Drama Studies
Chantal Panning .....	Box Office
Natalie Papoutsis .....	Drama Studies
Linda Philips (Assistant Head of Wardrobe) .....	Production
Martin Revermann .....	Drama Studies
Dianne Robertson .....	UTM Undergraduate Assistant, English & Drama
Jim Smagata (Technical Director) .....	Stagecraft, Production
Ralph Small .....	Tutorials, Camera, Styles, Director
Sam Stedman .....	Drama Studies
Peter Urbanek (Production Manager) .....	Stagecraft, Production
Lezlie Wade .....	Guest Director
Amanda White (Head of Properties) .....	Stagecraft, Production
Patrick Young (Sheridan Prog. Coord., Artistic Director) .....	Scene Study, Prof. Practice, Director
Beth Zdriluk .....	Drama Studies

\*

Maja Ardal, Stewart Arnott, Paul Brown, Jane Carnwath, Chow Yuen-Ching, Rosemary Dunsmore, David Ferry, Patricia Hamilton, Graham Harley, Christina James, Simon Johnston, Robert Kennedy, William Lane, Brian McKay, Andy McKim, Jim Millan, Sue Miner, Heinar Piller, Brian Richmond, A. Frank Ruffo, David Savoy, Sarah Stanley, Vinetta Strombergs, Kelly Thornton, Terry Tweed, Peter Van Wart, Xing Bang Fu ..... Past Guest Artists || Roger Beck, Ella Chan, Daniel Donaldson (*Chair*), Tracey Geobey, Paula Gonsalves, Katherine Kaszas, Marilyn Lawrie, Heinar Piller, Zaib Shaikh, Neil Silcox, Lawrence Stern, Kelly Straughan ..... | Program Advisory Committee |
| Leslie Thomson ..... | Chair, UTM Department of English and Drama |
| Michael Collins ..... | Dean, Sheridan School of Animation, Arts and Design |



## Lobby Artwork

# Ménage

To purchase one of the pieces on display please see the Box Office.

Art and Art History is a unique program in Canada offered by the University of Toronto Mississauga in collaboration with Sheridan College Institute of Technology and Advanced Learning.

Graduates of the three-year major or four-year specialist Art and Art History Program simultaneously receive a Bachelor of Arts or Honours Bachelor of Arts from the University of Toronto and a Diploma in Art and Art History from Sheridan.

Hands-on studio training at Sheridan and illustrated lectures in the history of art at the University of Toronto Mississauga provide students with the practical training and academic background needed for art careers.

For further information on the artwork in this exhibition, please Visit our website at [www.ArtandArtHistory.ca](http://www.ArtandArtHistory.ca)

### Art and Art History Painting 3 class

Jennifer Browne, Ruth Daniel, Sarah Dryburgh, Sabrina Fread, Amelia Jones, Bridget Rowe, Karolina Skupien, Melissa Taylor, Julie Vetro, Melissa White, Janice Williams.

## *The City and Island of Rhodes ...*



Baroque drawing of Rhodes showing features from Classical through Renaissance periods simultaneously – including the famous Colossus from Hellenistic times.



The Prince's Palace, City of Rhodes



Detail of a funerary stele, 5<sup>th</sup> Century BC

Beaumont and Fletcher

# The Maid's Tragedy

Directed by Patrick Young  
Original Music by Christopher Dawes  
Choreography by Sarah Jane Burton  
Fight Direction by Daniel Levinson  
Costumes by Joanne Massingham  
Set by Patrick Young  
Lighting by James W. Smagata  
Stage Management by Michelle Vantol

## THE CAST:

### The Royal Household

THE KING, *ruler of Rhodes* ..... Richard Chan  
LYSIPPUS (*Hymen in the Masque*), *brother to the king* ..... Qasim Khan  
AMINTOR, *a young nobleman, betrothed to Aspatia* ..... Craig McDermott  
STRATO (*Aeolus in the Masque*), *gentleman of the Court* ..... Nathaniel Bacon  
CLEON (*West Wind in the Masque*), *gentleman of the Court* ..... Brady Paron  
DIAGORAS, *gentleman of the Court* ..... Erick Fournier  
GUARDS ..... Catherine Boutin, Leslie McBay

### The Lord Chamberlain's Household

CALIANAX, *Lord Chamberlain, Keeper of the Fort* ..... Eric Double  
ASPATIA, *his daughter, betrothed to Amintor* ..... Diana Cofini  
ANTIPHILA (*Cynthia in the Masque*),  
*waiting gentlewoman to Aspatia* ..... Leslie McBay  
OLYMPIAS (*Night in the Masque*),  
*waiting gentlewoman to Aspatia* ..... Catherine Boutin

### The Warrior Household

MELANTIUS, *leading warrior of Rhodes* ..... Miguel Rivas  
DIPHILUS (*Neptune in the Masque*), *his brother* ..... Conor Walton  
EVADNE, *their sister* ..... Sarah Spencer  
DULA, *waiting gentlewoman to Evadne* ..... Janelle Hanna  
LADY (*East Wind in the Masque*) ..... Laura MacDonald  
SENTRY to Melantius ..... Laura MacDonald

\*

Assistant Director & Fight Captain ..... Erick Fournier  
Strato/Aeolus Understudy ..... William Dupius  
Dance Captain ..... Catherine Boutin  
Deputy Assistant Stage Manager ..... Jessica Phelan  
Assistant Stage Managers ..... Stephanie Chalmers, Melinda Dempster

\*

*The story unfolds in the City of Rhodes soon after the Crusades  
There will be one fifteen-minute intermission*

National Ballet, Canadian Opera Company, Taffelmusik, *Les Grande Ballets Canadien*, *Stageright Productions*, Fanshawe College, Alberta Ballet Company and Jabberwocky Theatre for Children. He was Production Manager, instructor and set/lighting designer for eight years at the University of Western Ontario. For Theatre Safety Consultants he inspected and consulted on over four hundred theatre projects and was theatre consultant for Fanshawe College's new Live Performance Industry facility. Peter's movie and television work includes, *The Bridge to Silence* with Lee Remick and Marlee Matlin, *The Super Dave Show*, *Raffi in Concert*, *Diamonds* and *X Men- The Movie*.

### JAMES W. SMAGATA, Technical Director, Lighting Design

Jim's passion for theatre began in Grade 7 when he was cast as Major-General Stanley in *The Pirates of Penzance* and title role in *The Sorcerer*. In high school, he performed as George Gibbs in *Our Town*, Rackham (the fastest gun in the west) in *The Death and Life of Sneaky Fitch* and as Bo in *Bus Stop*. For all of these shows he was also set designer and crew. At Brock University he acted in James Reaney's *Listen to the Wind*, Ionesco's *The Killing Game*, was "Might" in *Prometheus Bound* and Cléante in a 1940's Western version of Molière's *Tartuffe*. Jim concentrated on being a technician and landed roles as Technical Director/writer/actor/musician in Rainbow Troupe, Technical Coordinator at Brock, Technical Manager at Grande Prairie Regional College in Alberta, Chief of Production Services at Nepean Centrepointhe Theatre, and now as Technical Director at UTM. He has also directed *The Gin Game*, *Portrait in Black*, *The Creature Creeps!*, *Little Shop of Horrors* and acted and sung as Gandalf in *The Hobbit* and Mike in Jim Betts' *Thin Ice*. He was seen in the Erindale Drama Club's production of *Pump Boys and Dinettes* (which he also directed) and appeared in the drama club's fundraiser *Shenanigans*. He was Technical Director and Lighting Designer for the 2001 Mississauga Arts Council Awards. Jim has been the "Lunchtime" sound operator at the Shaw Festival for five seasons.

### JOANNE MASSINGHAM, Costumer

Joanne is pleased to be returning for her twelfth season at Theatre Erindale. Unlike the people she is surrounded by, she has never set foot on a stage when there are audience members in attendance and is happy living in the wings. She is however, always in awe of those who have the courage to step into the lights. Some costume design credits for Theatre Erindale include *The Hypochondriac*, *Lovers in Dangerous Times*, *A Midsummer Night's Dream*, *Hot L Baltimore*, *The Revenger's Tragedy*, *Gut Girls*, *7 Stories*, *Les Belles-Soeurs* and *The Relapse*. She has also designed costumes for *My Fair Lady* and *The Buddy Holly Story* (Stage West), and set and costumes for Artemis Theatre's acclaimed 1998 production of Charles Dickens reading from *A Christmas Carol* (Theatre Passe Muraille). She has been Head of Wardrobe for numerous Theatre Companies including Theatre Sheridan, *Le Théâtre Français de Toronto*, Young Peoples' Theatre, U of T Opera School, York University, Theatre Passe Muraille and Skylight Theatre.

### Patrons:

Roger and Janet Beck, Ron and Lloyd Cameron-Lewis, Wolfgang and Astrid Hempel, Stan and Gail Jakaitis, Jack McCaffrey, Ken McMullen, Barbara Michasiw, Nadia and Gordon Murphy, Denise Norman, Jaroslavfa Opratko, John Quinn, Catherine Rubincam, Thomas and Wendy Seguin, Peter Silcox, Leslie Thomson, Shirley M. Walker, Margaret Young, Patrick Young

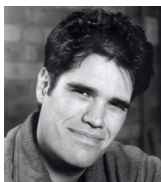
### Donors:

Mirene Wild

### Special Thanks to

Gail Richter and family for donating an upright piano to the TDS program  
Poculi Ludique Societas (PLS) Group

1991 to 2003 he was first organist, and later Director of Music, for Toronto's St. James' Cathedral. Having recently toured Hungary, Slovakia, Austria and New York State with the Toronto Children's Chorus, and served as accompanist and continuo artist to Hellmuth Rilling in Toronto's Third International Bach Festival, in 2007 he will tour Ireland with the Georgetown Choral Society, and appear as soloist in two of Roy Thomson Hall's popular Choir and Organ concerts. His recent graduate research project encompassed the production and hosting of a 20-episode radio show and a major paper concerned with postmodern perspectives on genres of music, and may be found along with other continuing work at [www.genreimplosion.ca](http://www.genreimplosion.ca).



#### **DANIEL LEVINSON, Fight Director**

Daniel has been the resident fight director and instructor for Theatre and Drama Studies and Theatre Erindale since 1995 and for Theatre Sheridan since 1996. Daniel wears many hats as he is an actor, writer, director and the artistic director of Rapier Wit. Rapier Wit is both a production company and Canada's oldest continuous stage combat school. Daniel is certified as a fight director and instructor with Fight Directors Canada, Canada's only internationally recognized and national organization of stage combat training. Daniel has held the positions of National Training Coordinator, Treasurer, and President for FDC. Some of Daniel's past productions at the two schools have include *The Scams of Scapin*, *A Midsummer Night's Dream*, *The Taming of the Shrew*, *The Revenger's Tragedy*, *Man of La Mancha*, *The Gut Girls*, *The Beaux' Stratagem*, *How Could You, Mrs. Dick?*, *Les Liaisons Dangereuses*, *'Tis A Pity She's A Whore*, *Women Beware Women*, *The Constant Players*, *The Dispute*, *The Country Wife*, and *Candide*.



#### **SARAH JANE BURTON, Choreographer & Movement Coach**

Sarah Jane Burton, a Dora Award nominee for Outstanding Choreography for a Play, recently directed the Guelph Symphony *Weightlessness in Space* for an L.A. television series. Her choreography has appeared in operas, musicals, plays and independent dance productions for the Canadian Opera Company, Harbourfront Series, fFIDA, CBC television specials, and theatres across Ontario, in upstate

New York, France and West Africa. Sarah has also coached and choreographed various Theatre Erindale productions such as *The Country Wife*, *Pride and Prejudice*, *The Libation Bearers*, *The Immigrant Years*, *Women Beware Women*, *Unity (1918)*, and *Love's Labour's Lost*.

Ms. Burton received her B.A. in Dance from Butler University, Indianapolis, then danced with the Chicago Opera Company and International Ballet Company before appearing on Broadway as a principal actor/dancer under the direction of Agnes de Mille in *Oklahoma!* and *Brigadoon*, William Hammerstein in *South Pacific* and Michael Bennett in a revival of *West Side Story*.

Combining her professional experience with an M.A. degree from Wesleyan University, and Certification as a Laban Movement Analyst (NYC), S.J. has taught in various theatre programs and is currently the professor of Movement and Dance for UTM-Sheridan Theatre and Drama Studies Program as well as Sheridan Institute's Performing Arts Preparation Program.

#### **PETER URBANEK, Production Manager**

This is Peter's seventh season as the Production Manager at Theatre Erindale. For the past thirty years he has worked in theatres across the country. His past credits include Production Manager for: Magnus Theatre, The University of Western Ontario, Markham Theatre and The Globe Theatre. Peter has over four hundred lighting and set design credits. He has worked with such companies as Mountain Dance Theatre, Vancouver Playhouse,

## **FOR THE MAID'S TRAGEDY**

Incidental Music .....	Estampie: <i>Crusaders in Nomine Domini</i>
Pre-show and Intermission Music .....	Constantinople: <i>De Castille à Samarkand</i>
Music Editing .....	Patrick Young
Text Editing and Dramaturgy .....	Patrick Young
Poster Art.....	Crivelli: <i>The Magdalene</i>
Poster Design.....	Patrick Young
Scenic Painting.....	Amanda White
Make-Up and Hair Consultant.....	Anne MacLoughlin
Set Crew .....	Drew Dunlop, Kelsey Goldberg, Lisa Hood, Sofia Hrstic, Melanie Hrymak, Philippe Jullian, Jennifer Rockman, Andrew Tribe
Props Crew .....	Clare Blackwood, Kate Conway Sophia Fabiilli, Samara Stern
Running Crew.....	Laura MacDonald, Jocelyn Perry
Wardrobe.....	Ryan Fisher, Rachelle S. Magil, Nathan Ohl My-Anh Tran, Michael Twyman
Front of House.....	Tamara Zdravkovic

## **FOR THEATRE ERINDALE**

Artistic Director.....	Patrick Young
Executive Producer.....	Stephen Johnson
Production Manager .....	Peter Urbanek
Technical Director .....	James W. Smagata
Head of Wardrobe .....	Joanne Massingham
Wardrobe Assistant .....	Linda Phillips
Head of Properties .....	Amanda White
Business Manager.....	Rob Eberts
Public Relations.....	Nicolle Wahl
Program Layout.....	Pamela Armah
Program Photography .....	Steve Jaunzems
Brochure, Season Poster and Program Cover Design.....	Alison Dias
Box Office Manager .....	Chantal Panning
Box Office/Technical Assistants .....	Ryan Fisher, Katie Hemmingway, Lisa Hood, Monica Maika, Jae Pyl, Jessica Sequin, Hira Syed

\*

*Please turn off cell phones, pagers and watch alarms.*

*Cameras and recording devices are prohibited by law.*

*We regret that, out of consideration for the audience and the performers,  
latecomers and re-entries cannot be permitted.*



## The Cast . . .

**NATHANIEL BACON**, 3<sup>rd</sup> Yr. Theatre and Drama Studies

**Home Town:** Burnt River **Other Training:** Kawartha Lakes Young Company member from 2003-2004; Coordinator of St. Thomas Aquinas Drama Club (2004) **Theatre Erindale:** Wardrobe Crew Chief– *Thirteen Hands*; Props Crew Chief – *Picnic at Hanging Rock* **Erindale Fringe:** Hugh Trainer – *Colours in the Storm* **Other Companies:** Courfeyrac – *Les Misérables* (Showplace Peterborough); Bernardo – *West Side Story*, Tommy Djlal – *The Music Man* (Lindsay Academy Theatre) **Favourite Saying:** If you can't beat 'em, ..... try harder".

**CATHERINE BOUTIN**, 3<sup>rd</sup> Yr. Theatre and Drama Studies

**Home Town:** Ottawa **Other Training:** Piano, Grade 9 Conservatory; Classical ballet, ballet jazz. **Theatre Erindale:** Wardrobe – *Alarum Within*, *Women Beware Women*; Front of House Manager – *Picnic at Hanging Rock*; Running Crew – *The Constant Players* and *the The Dispute* **Erindale Fringe:** Beth – *Paper Trails* **Other Companies:** Pupil – *The Lesson* (University of Ottawa) **Favourite Saying:** "Everything happens for a reason".

**RICHARD CHAN**, 3<sup>rd</sup> Yr. Theatre and Drama Studies

**Home Town:** Bolton **Theatre Erindale:** Wardrobe Crew – *The Play's the Thing*; Set Crew – *Unity* (1918); Assistant Stage Manager – *Picnic at Hanging Rock*; Lighting Operator – *The Country Wife* **Erindale Fringe:** Jekyll & Hyde: The Musical – *Spider/Glossop* **Other Companies:** Mercutio – *Romeo and Juliet*, Oberon – *A Midsummer Night's Dream* (Forward Theatre); Lady Love – *An Experiment in Elizabethan Comedy* (PLS) **Favourite Saying:** "If nothing we do matters, then all that matters is what we do" – Angel

**DIANA COFINI**, 4<sup>th</sup> Year Theatre and Drama Studies

**Home Town:** Mississauga **Other Training:** 2006 International Michael Chekhov workshop with Michael Chekhov Association, New York city; On the presence of acting workshop with Laurence Follows; Honours Gr. 8 Piano & Singing (Royal Conservatory of Music); Honours intermediate jazz and ballet with Canadian Dance Teachers Association **Theatre Erindale:** Harriet, Society Woman, Court, etc. – *Radium Girls*; Adine – *The Dispute*; Co-Creator/Ensemble – *The Immigrant Years* **Erindale Fringe:** Katie – *Paper Trails*; Celia – *In the Skin of Sleep* (UofT Drama Festival); Anna Mae – *Talking with .....* **Other Companies:** Solo Performer – *Ember* (DNA Theatre); Belle – *Beauty & the Beast/Belle Storytime*, Jasmine – *Jasmine* (Fantasy Fables) **Ambition:** To share my love and passion with the world through my work as an artist.

**ERIC DOUBLE**, 4<sup>th</sup> Year Theatre and Drama Studies

**Home Town:** Richmond Hill **Other Training:** Tarragon Spring Training Program; Resurgence Summer Youth Theatre Conservatory **Theatre Erindale:** Dr. Quack – *The Country Wife*; Ensemble – *Immigrant Years*; Props Crew Chief – *Unity* (1918); Assistant Stage Manager – *The Play's the Thing* **Erindale Fringe:** Jerry – *The Zoo Story*; Brian – *Heart's Desire* **Other Companies:** Morris – *Pieces* (Smashin Bat Theatre) **Favourite Saying:** "HUET! – Bob Gainey

**JANELLE HANNA**, 3<sup>rd</sup> Yr. Theatre and Drama Studies

**Home Town:** Belleville **Theatre Erindale:** Front of House Manager – *Thirteen Hands*; Props – *Picnic at Hanging Rock* and *Love's Labours Lost*; Wardrobe – *Alarum Within* **Erindale Fringe:** Estelle – *Cocktails at Pam's*; Jess – *Paper Trails*; Stage Manager – *Colours in the Storm* **Other Companies:** Molly – *Molly & Stella* (U of T Drama Festival); Prissy Andrews – *Anne of Green Gables* (Stirling Festival Theatre); Sally Brown – *You're a*

## Direction and Design. . .

**PATRICK YOUNG, Director and Artistic Director, Set Design**

Patrick graduated in English from Victoria College, University of Toronto, trained in Theatre on a graduate scholarship at Indiana University, and was soon a well-known actor across Canada. His Toronto credits included the record-breaking hits *Flicks*, *The Relapse*, and the original production of *Automatic Pilot*, as well as *Chinchilla* and the last national tour of *Spring Thaw*. Elsewhere the range included *Misalliance* in Boston, *Uncle Vanya* and *Tobacco Road* in Indiana, *Windsor* in Charlottetown, *Dames at Sea* in Winnipeg, *Hay Fever* across BC and *Scapin* across Ontario, plus guest starring on such TV series as *The Great Detective* and *Night Heat*. During the 1980s, he branched into playwriting, directing, and teaching. He is the author of the award-winning biographical plays "*Winnie*" (also filmed for television), *Aimee!*, and *Abigail, or The Gold Medal*, plus numerous industrial shows. He has held the posts of Artistic Director of Dalhousie Theatre Productions in Halifax, Director/Dramaturge of the Music Theatre Writers' Colony at the Muskoka Festival, and Associate Director/Playwright in Residence at the Lighthouse Festival Theatre. Teaching includes Waterloo, Dalhousie, George Brown, Humber, and Gaya College in Malaysia. He is the founding Artistic Director of Theatre Erindale and the founding Sheridan Coordinator of the Theatre and Drama Studies Program (which is now in its sixteenth year). For Theatre Erindale he has directed *The Farm Show*, *The Relapse*, *The Revenger's Tragedy*, *7 Stories*, *Vital Signs*, *The Hypochondriac*, *The Man of Mode*, *Les Liaisons Dangereuses*, *Pride and Prejudice*, *Unity* (1918), and *The Country Wife*; for Theatre Sheridan *Jimmy Dean*, *Jimmy Dean* and *Nellie McClung*; and elsewhere *The Shadow Box*, *Split*, *The Crucible*, *Jitters*, *Cheek to Cheek*, *Waiting for the Parade*, *You Can't Take It With You*, the second production of *Midnight Madness*, the World Première of *The Growing Season*, and more new play workshops than he can count.



**ERICK FOURNIER, Assistant Director and Fight Captain**

Erick Fournier is very happy and honored to be invited back to the Theatre Erindale stage in this production of *The Maid's Tragedy* both as the assistant director and as an actor. A recent graduate of Sheridan College Institute of Technology and Advanced Learning's acting program, one half of the Theatre and Drama Studies program, Erick has returned to the University of Toronto in order to continue his Honors B.A. in the TDS program, the second half of the program. In 2005-06 Erick, along side 8 of his TDS classmates, co-founded a movement theatre troupe called *S.O.S. Theatre* (check out their website at [www.sostheatre.com](http://www.sostheatre.com)), and in the summer of 2006, the company performed its first show "i" at the Ottawa FRINGE Festival which, by popular acclaim, won the Best in Venue award. Lately Erick has been trying his hand in film and now with almost a dozen film credits now under his belt, he plans to continue training in this medium and one day take the film and TV industry by storm. Some of Erick's favorite stage credits include Mesrou in *The Dispute* (Theatre Erindale); Lyle in *Footloose* (Grand Theatre of Kingston); and Le Prince in *Les Héros de mon Enfance* (Les Tréteaux de Kingston); and some of his favorite film credits include Jason Francis in *Educated...* (Dreamer of the Dreams); Chad in *Chaperone* (Scanner2 Productions); and Peter Toole in *He's No Dummy* (Baby Jewel Productions).



**CHRISTOPHER DAWES, Musical Director**

CHRISTOPHER DAWES is a Toronto freelance musician, writer, and consultant based at the Church of St. George the Martyr, and working principally with Music and Drama programs of the University of Toronto. This is his fourth and busiest season with Theatre Erindale, contributing arrangements, original music and musical direction to three new productions, and the remount of "Thirteen Hands". From



**DANIEL MIOTTO, Audio Technician**

2<sup>nd</sup> Year Sheridan Technical Production

**Home Town:** Oakville **Other Training** 4 years at the Oakville Centre for the Performing Arts as a Technician **Theatre Erindale:** Lighting – *Waiting for the Parade* Theatre Sheridan: Set Crew; Production Assistant – *No, No Nanette*; Live Audio Mix – *She Loves Me* **Other Companies:**

Audio Crew – *Cabaret* (Stage West); Fly Operator – *2006 Dance Season* (Oakville Centre)

**Favourite Saying:** “Rock and Roll.”



*Good Man, Charlie Brown* (Quinte Youth Actors) **Ambition:** To play Tinkerbell for Disney

**QASIM KHAN, 3<sup>rd</sup> Yr. Theatre and Drama Studies** **Home Town:** Newmarket **Other Training:** 4 years vocal jazz **Theatre Erindale:** Assistant Stage Manager – *Thirteen Hands*; Running Crew – *The Immigrant Years* **Erindale Fringe:** Stewart – *One Good Marriage* **Other Companies:** Allgaier – *Napoleon vs. The Turk* (Toronto Fringe); Series Lead – *Modern Convenience* (M.C. Productions); Heavy Metal Psycho – *Total Request Dead* (Paramount Canada’s Wonderland); Dancer – *Anything Goes*; *Guys & Dolls* (Theatre Aurora); Benjamin – *Joseph and the ...* (Marquee Productions); Principal – *Style by Jury* (W Network) and *All I wanted to do ...* (Mutt Nutt) **Favourite Saying:** “I am Darren Nichols. Deal with THAT.” – *Slings and Arrows* Season!

**LESLIE McBAY, 3<sup>rd</sup> Yr. Theatre and Drama Studies**

**Home Town:** Sault Ste. Marie **Other Training:** Grade 8 Honours in Singing from RCM **Theatre Erindale:** Blanche – *Picnic at Hanging Rock*; Props – *The Country Wife*; Front of House – *The Immigrant Years* **Erindale Fringe:** Stage Manager – *Sandra Goodwife’s Big Day* **Other Companies:** Judy – *Another Antigone* (Pulchchain Theatre); Fantine – *Les Miserables* (Algoma District School Board); Beatrice – *Much Ado About Nothing*; Hermia – *A Midsummer Night’s Dream* (Stage 1 Theatre Co.) **Favourite Saying:** “Acting is human nature with technique”. – Richard Howard

**CRAIG McDERMOTT, 4<sup>th</sup> Year Theatre and Drama Studies**

**Home Town:** Woodstock **Other Training:** Basic Stage Combat certification – Daniel Levinson/Fight Directors Canada **Theatre Erindale:** Roeder – *Radium Girls*; Mesrin – *The Dispute*; Co-Creator/Ensemble – *The Immigrant Years*; Marcadé/Forester – *Love’s Labour’s Lost* **Erindale Fringe:** Stuart – *One Good Marriage* **Other Companies:** Ensemble – *In Love with Broadway*, Gilbert Blythe – *Anne of Green Gables* (WCI Red Players); Fred – *The Express Line* (Huron Park S.S.) **Favourite Saying:** “Of course shortcuts are hard! If it wasn’t hard, it would just be the way”. – Road Trip

**BRADY PARON, 3<sup>rd</sup> Yr. Theatre and Drama Studies**

**Home Town:** London **Other Training:** Vocal lessons with Elaine Overholt; Classical voice training with Vicki St. Pierre **Theatre Erindale:** Assistant Stage Manager – *The Country Wife*; Running Crew – *Picnic at Hanging Rock*; Wardrobe – *Alarum Within* **Other Companies:** Motel – *Fiddler on the Roof*, Ewart Dunlop – *The Music Man* (The Grand Theatre); Gorgon – *How Lucretia Stole Christmas* (The Arts Project; MaitreD’ – *Captive Audience* (Simply Theatre) **Ambition:** Success. Personal and Career-related success, whatever that means as my life goes on.

**MIGUEL RIVAS, 4<sup>th</sup> Year Theatre and Drama Studies**

**Home Town:** Ajax **Theatre Erindale:** Meslis – *The Dispute*; Blaise – *The Constant Players*; Ensemble – *The Immigrant Years* **Erindale Fringe:** Shipuchin – *The Festivities* **Other Companies:** Elwood P. Dowd – *Harvey*, Lenny – *Of Mice and Men*, Petruchio – *The Taming of the Shrewd* (All Saints Theatre); Co-Creator/Ensemble – *Frenzy* (Frenzy Productions, 2003-present) **Favourite Saying:** “Buh-Bow!” – Steven Boeant

**SARAH SPENCER, 4<sup>th</sup> Year Theatre and Drama Studies**

**Home Town:** Sudbury **Theatre Erindale:** Katherine Wiley – *Radium Girls*; Lisette/Hermiane – *The Constant Players/The Dispute*; Co-Creator/Ensemble – *The Immigrant Years* **Erindale Fringe:** Emma – *Jekyll & Hyde: The Musical*; Marie Trainor – *Colours in the Storm*; Rodeo – *Talking with ...* **Other Companies:** Amy – *Tape* (The Unweeded Garden Theatre); Carmen – *Fame* (Sudbury S.S.); Sheila Franklin – *Hair* (Theatre Cambrian) **Favourite Saying:** “You may say that I’m a dreamer, but I’m not the only one. I hope someday you’ll join us and the world will live as one”. – John Lennon



**CONOR WALTON**, 3<sup>rd</sup> Yr. Theatre and Drama Studies

**Home Town:** Port Hope **Theatre Erindale:** Running Crew – *Picnic at Hanging Rock*  
**Erindale Fringe:** Sir Danvers Carew – *Jekyll & Hyde* **Other Companies:** Fagin – *Oliver!*  
(St. Mary's Secondary); Big Deal – *West Side Story*, Cord Elam – *Oklahoma* (Ganaraska  
Summer Stage); The Caliph – *Kismet* (Victorian Operatta Society) **Dedication:** “This  
Season is dedicated to the loving memory of my grandpa, Major John Dure, and my  
grandma, Mavis Dure.



**LAURA MacDONALD**, 2<sup>nd</sup> Yr. UTM/Sheridan Theatre & Drama Studies

**Home Town:** Antigonish **Other Training:** Premier class dance training  
with the Antigonish Creative Dance Association in Highland Dancing;  
Ballet, Jazz, Hip Hop and Contemporary dancing **Theatre Erindale:**  
Wardrobe – *The Constant Players* and *The Dispute* **Erindale Fringe:**  
Assistant Stage Manager – *Jekyll and Hyde*; Running Crew – *Cocktails at*  
*Pam's* **Other Companies:** Wardrobe Technician – *Festival Antigonish*  
(Summer Theatre 2006 Season); Mary Warren – *The Crucible*, Anja Jane – *Listening to the*  
*Wind*, Kitty Verdun – *Charley's Aunt* (Theatre Antigonish) **Favourite Saying:** “I’m  
never wrong, it’s just sometimes I don’t have all the information” – R.J.J. MacDonald



**WILLIAM DUPIUS**, Understudy

1<sup>st</sup> Yr. UTM/Sheridan Theatre and Drama Studies

**Home Town:** North Lancaster **Other Training:** 3 years drama class at  
high school level **Theatre Erindale:** Wardrobe Crew – *Radium Girls*;  
Props Crew – *Waiting for the Parade* **Other Companies:** Danny Zuka –  
*Grease*; Judas – *Godspell*; The King – *The Ugly Duckling*; Sam Sewerd –  
*Dracula: The Musical* (GDHS) **Ambition:** Acting is my passion and I  
hope to experience it in every possible way.



## Stage Management . .



**MICHELLE VANTOL**, Stage Manager

2<sup>nd</sup> Year Sheridan Technical Production

**Home Town:** Mississauga **Other Training** Cawthra park; Visual Arts  
Major for four years and Ontario College of Arts and Design; Facility of  
Foundation Arts for one year **Theatre Erindale:** Stage Manager – *The*  
*Maid's Tragedy*; Assistant Stage Manager – *The Constant Players* and *the*  
*Dispute* **Theatre Sheridan:** Head Scenic Painter/Scenic Painter – *She*  
*Loves Me & Candide*; Costume Builder – *Catch a Rising Star & Falsettas*; Scenic Painter  
– *Company & Rogers and Heart* **Ambition:** Theatre/Film Costume and Set Designer and a  
Film Director.



**JESSICA PHELAN**, Deputy Assistant Stage Manager

2<sup>nd</sup> Year Theatre and Drama Studies **Home Town:** St. Catharines **Other**

**Training:** 15 years violin training **Theatre Erindale:** Deputy Assistant  
Stage Manager – *Canadian Kings of Repertoire*; Wardrobe Crew – *The*  
*Constant Players/The Dispute* **Erindale Fringe:** Assistant Stage Manager  
– *Cocktails at Pam's* **Other Companies:** Sybil – *Sybil and Sylvia*;  
Number One – *The Girl Who was Asked to Turn Blue*; Edna – *Bye Bye Birdie* (Laura Secord  
S.S.); Ensemble – *Enough is Enough* (Phoenix Fire) **Favourite Saying:** “If you are a  
dreamer, come in.” – Shel Silverstein



**STEPHANIE CHALMERS**, Assistant Stage Manager

1<sup>st</sup> Year Sheridan Technical Production

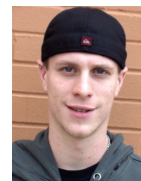
**Home Town:** Brampton **Other Training** graduated from Mayfield  
Secondary School of the Arts, attended Toronto Film College **Theatre**  
**Erindale:** Assistant Stage Manager – *The Maid's Tragedy* **Theatre**  
**Sheridan:** Theatre Properties; Running Crew-props – *Candide*; Theatre  
Properties – *She Loves Me* **Favourite Saying:** “Life is not about finding ones self, it’s  
about creating ones self” – Bernard Shaw.



**MELINDA DEMPSTER**, Assistant Stage Manager

1<sup>st</sup> Year Sheridan Technical Production

**Home Town:** Mississauga **Other Training** graduated Meadowvale  
Secondary School, attended Wilfred Laurier University's English/Film  
program for 2 years **Theatre Erindale:** Assistant Stage Manager – *The*  
*Maid's Tragedy* **Theatre Sheridan:** Scenic Construction – *She Loves*  
*Me; Candide* **Other Companies:** Set Design – *The Bare Cabin* (Sears Drama Festival)  
**Favourite Saying:** “Up there for thinking, down there for dancing”. – Sarah Hirst



**KEITH BAKER**, Lighting Operator

2<sup>nd</sup> Year Sheridan Technical Production

**Home Town:** Georgetown **Other Training** 5 years at John Elliot Theatre,  
Georgetown District High School; Concert; Corporate set-ups/tears  
**Theatre Erindale:** Audio – *Waiting for the Parade* **Theatre Sheridan:**  
Technical Assistant – *Candide*; Production Assistant – *Falsettos*; Lighting  
Crew – *Plane Crazy* **Other Companies:** Theatre Supervisor – *musicals,*  
*drama, dance* (John Elliot Theatre); Technician – *Canada's Wonderland* **Favourite**  
**Saying:** “What time is it? Go Time Yah”